



La Carat  
170 avenue Thiers  
69455 LYON CEDEX 05



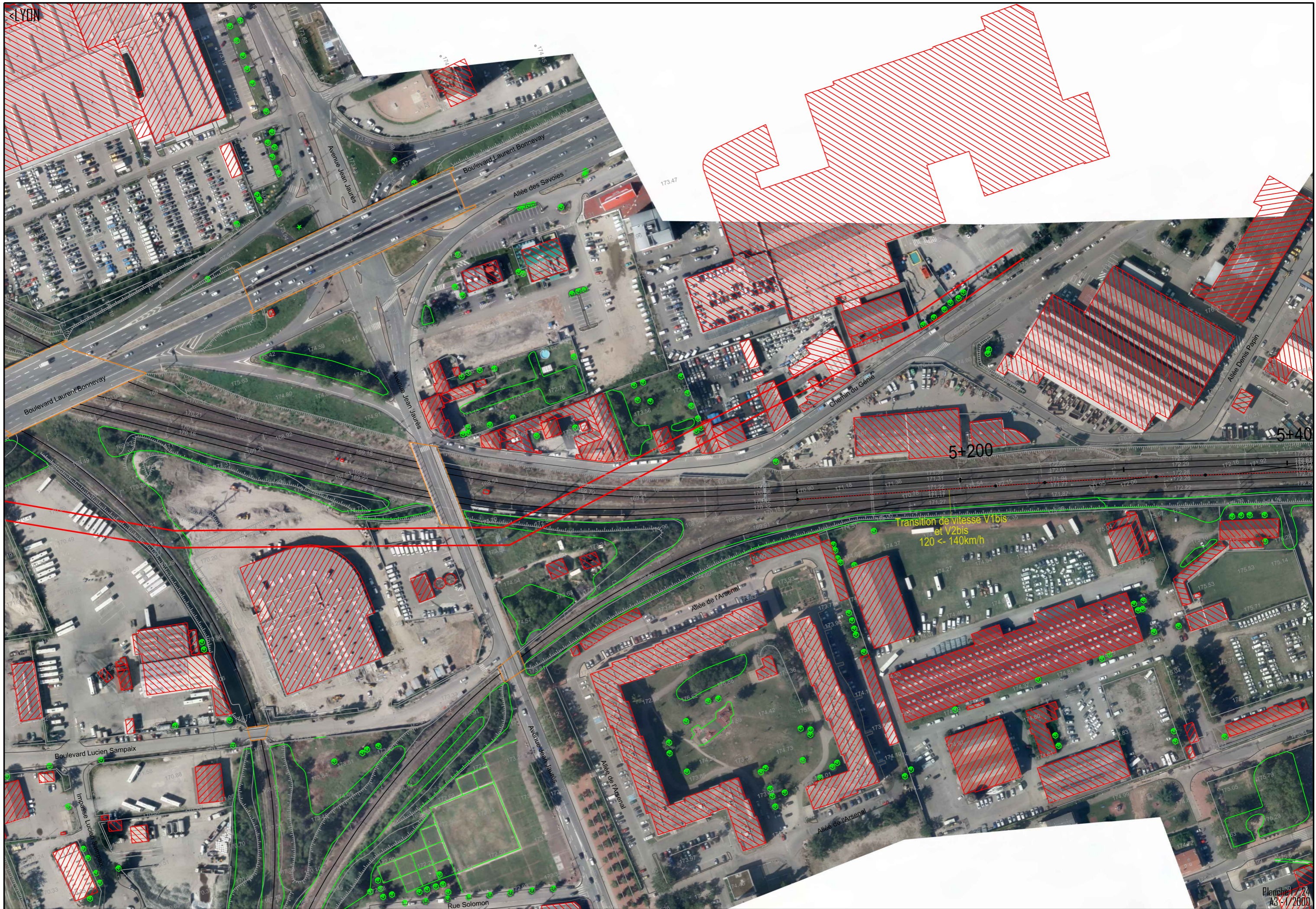
# Etude de faisabilité du NFL

## SECTEUR ST-FONS / GRENAY Scénario A-B4 : SDM simple

Indice	Date	Modification	Dessiné	Vérfié	Approuvé
A	07/09/2015	Création du document	DMA	ELC	NCL
B	14/09/2015	Ajout Emprises Variante Grenay	DMA	ELC	NCL
C	22/10/2015	Modification Triage St Priest et rétablissement de la VC9	ARA	ELC	NLC

Ligne	Mission	Entité émettrice	Discipline	Type de document	N°Chrono	Indice
LYON-GRENOBLE	Faisabilité	EGIS RAIL	-	PLAN	-	C

Echelle (s): ELC	Date : 22/10/2015
------------------	-------------------

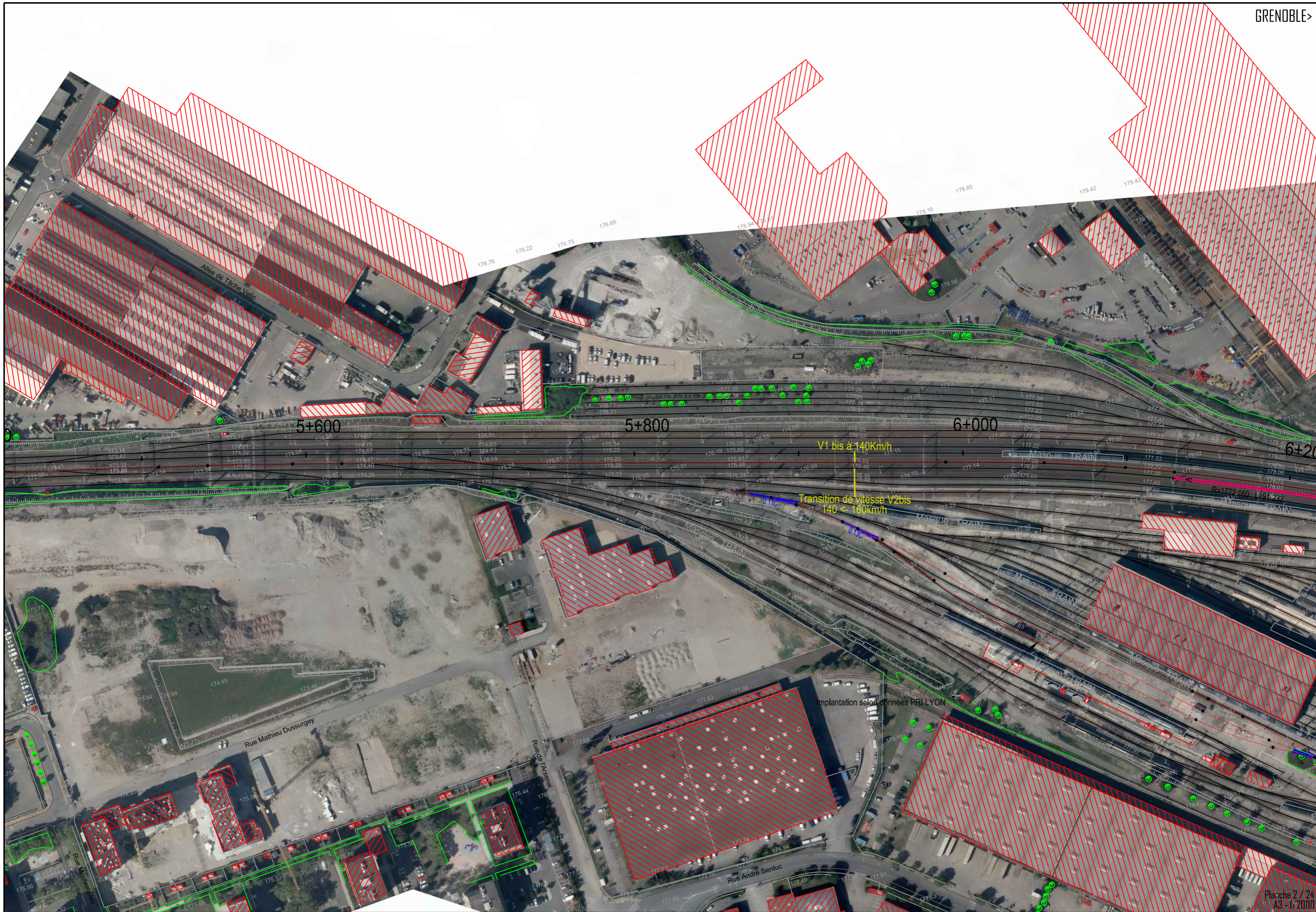


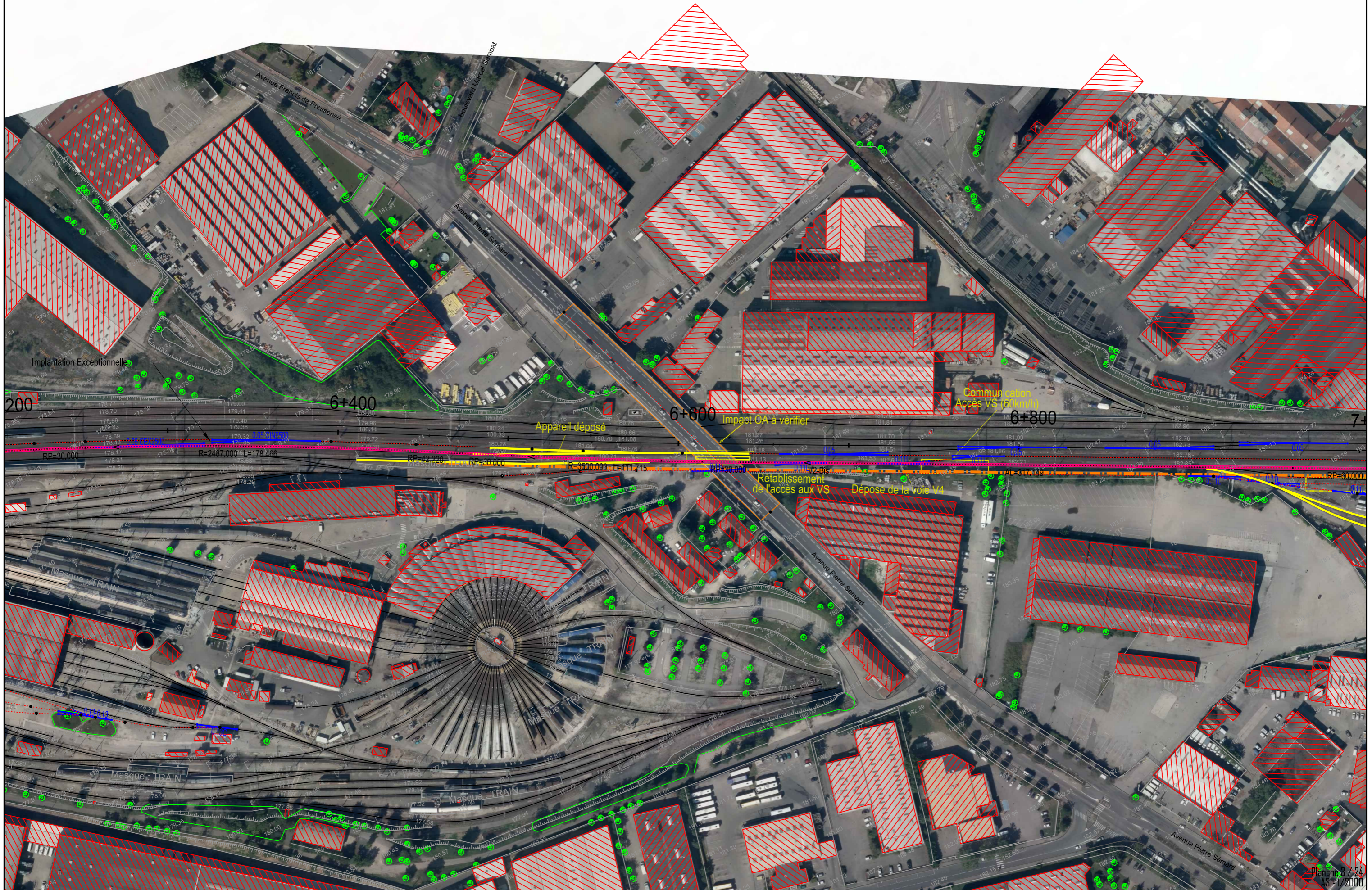
LYON

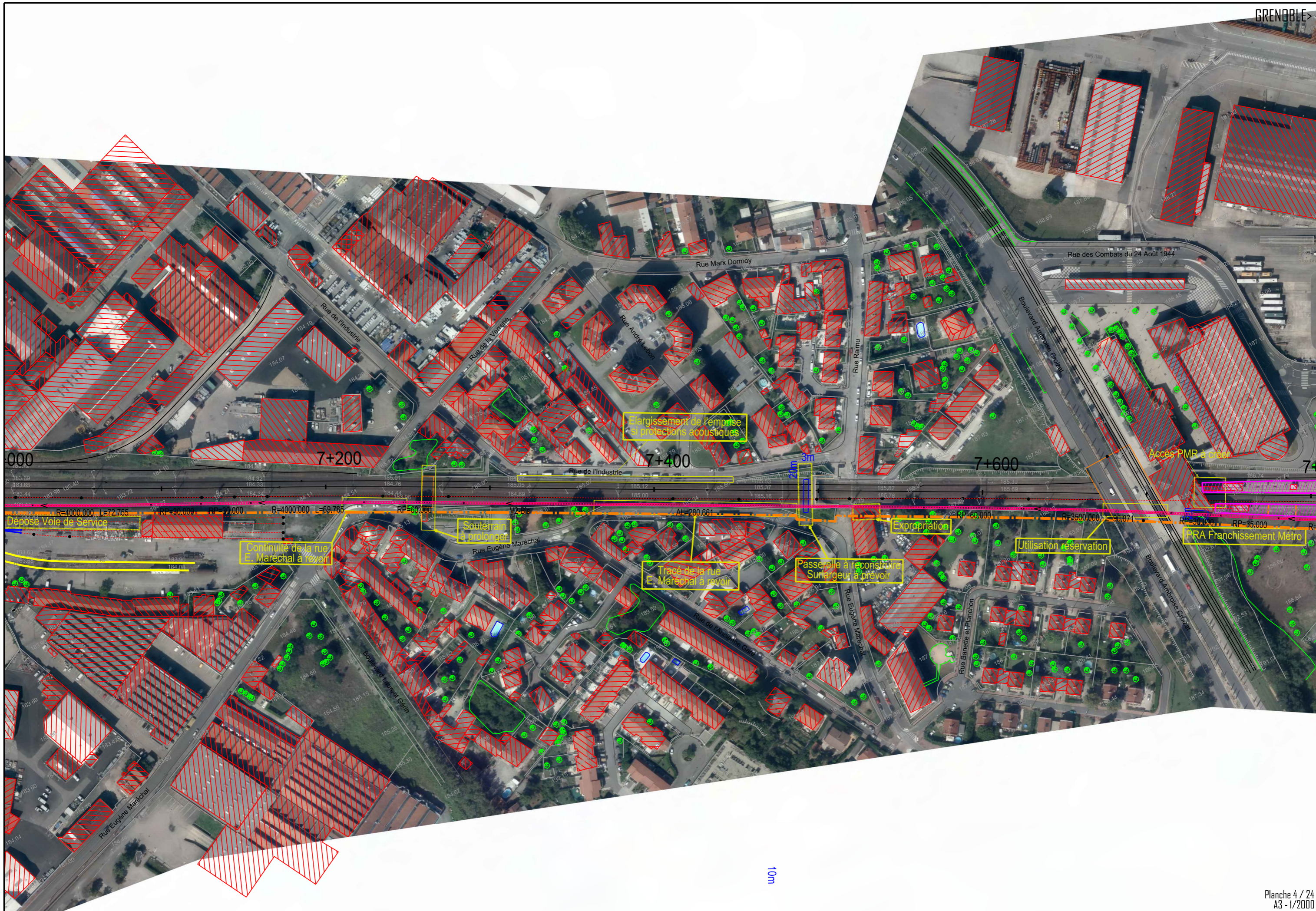
Transition de vitesse V1bis et V2bis 120 <- 140km/h

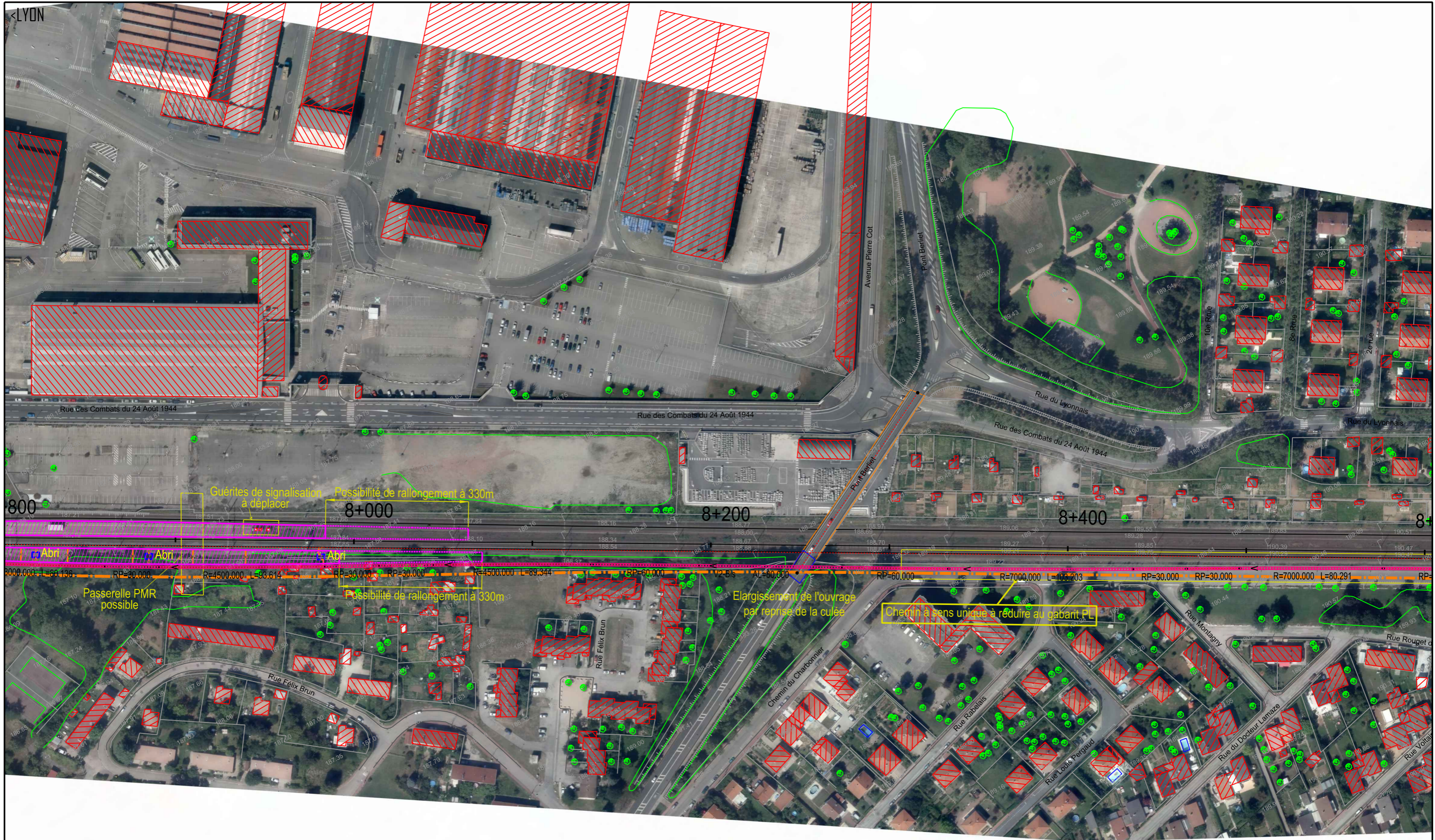
5+200

5+40

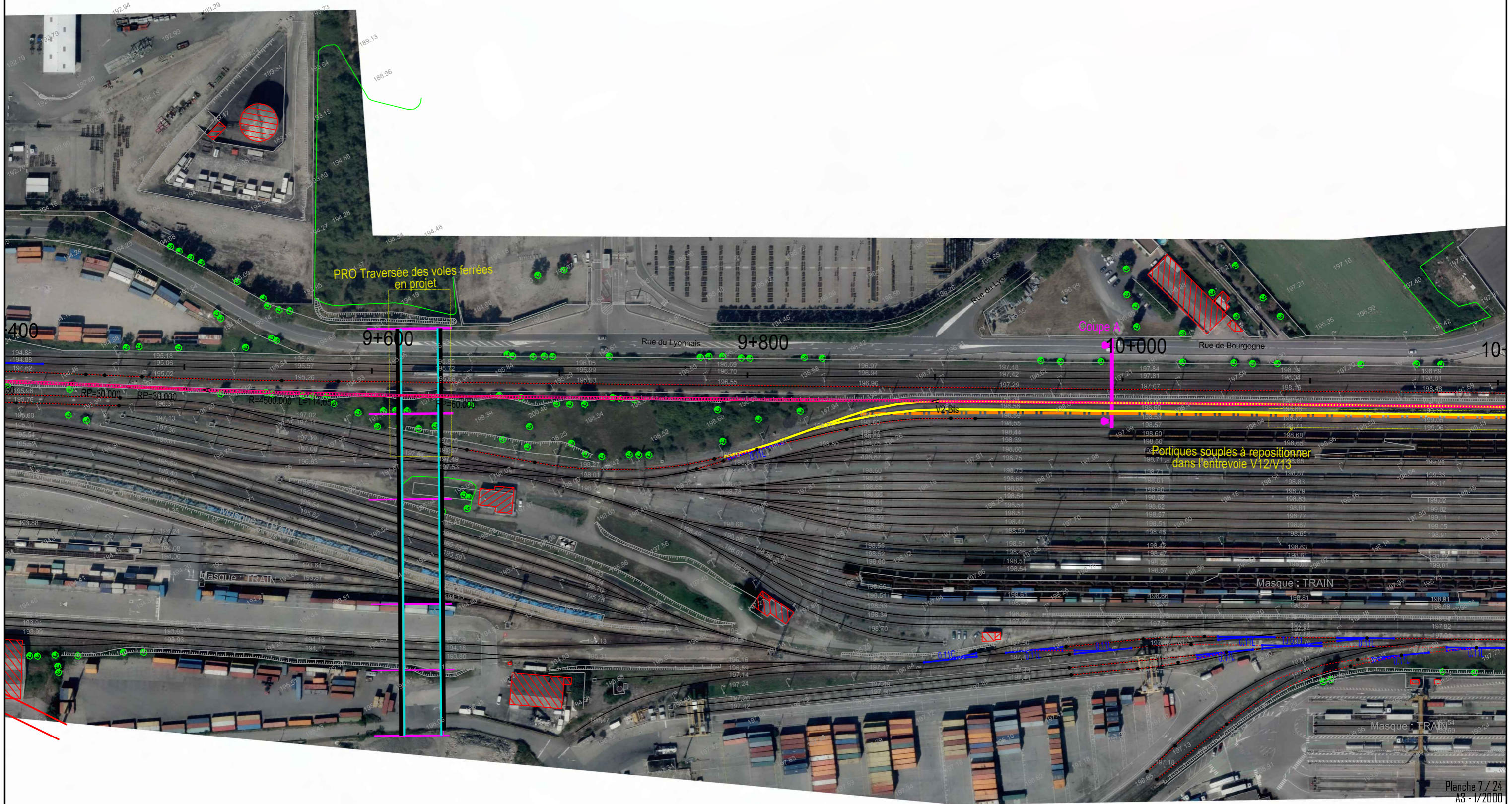




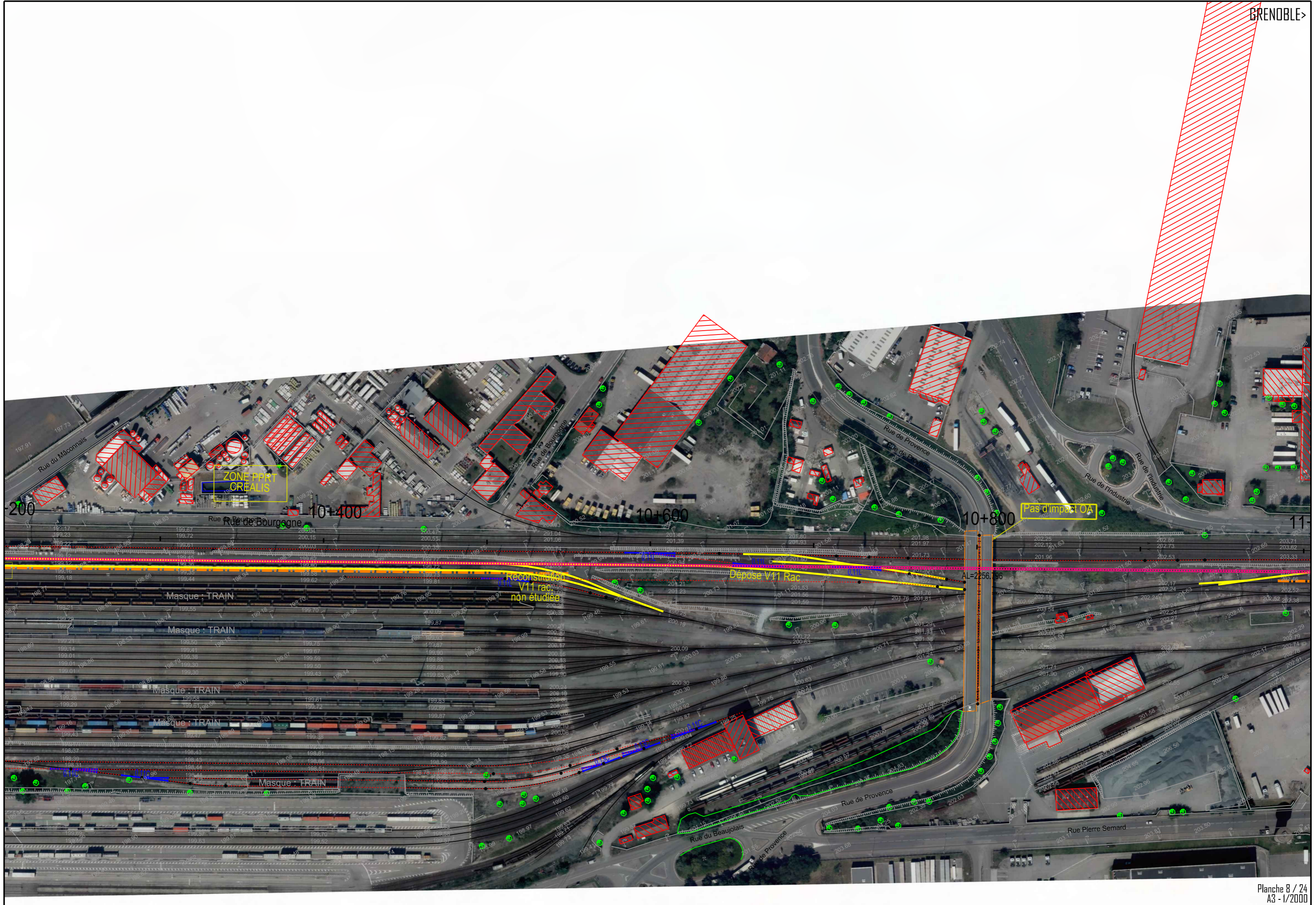












ZONE PPR1  
CREALIS

200

Rue de Bourgne 10+400

10+600

10+800

Pas d'impact OA

11

Reconstruction  
V11 rac  
non étudiée

Dépose V11 Rac

AL=2256,196

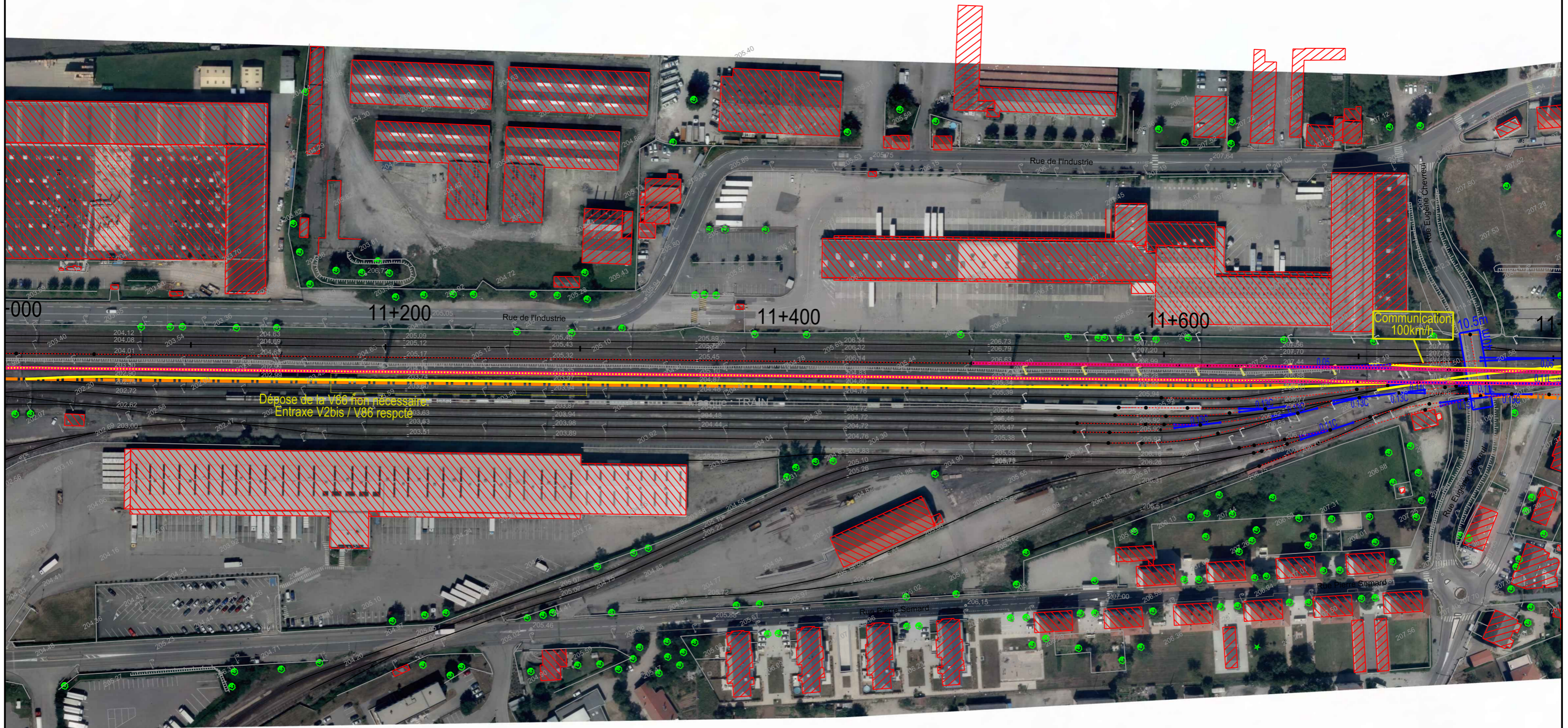
Masque : TRAIN

Masque : TRAIN

Masque : TRAIN

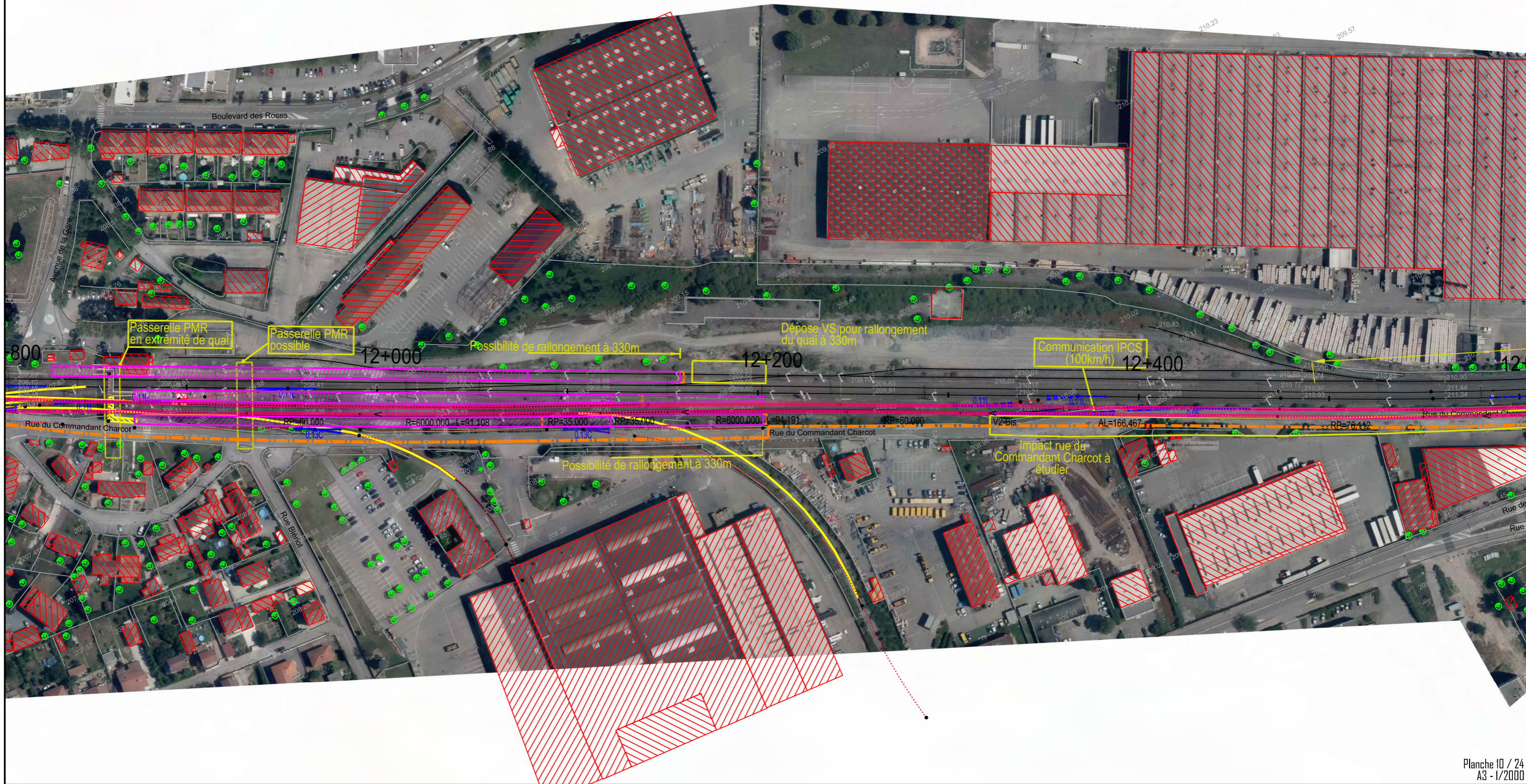
Masque : TRAIN

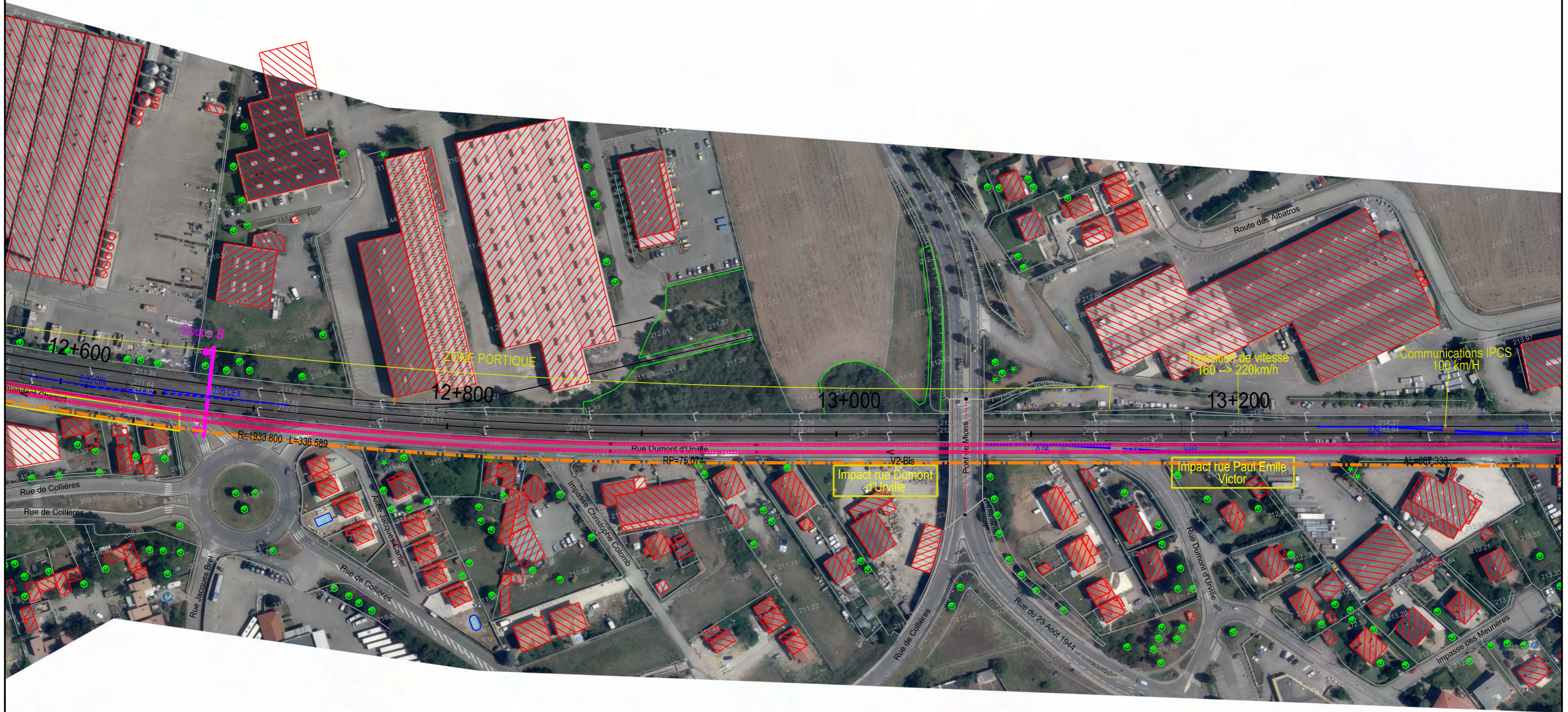
Masque : TRAIN



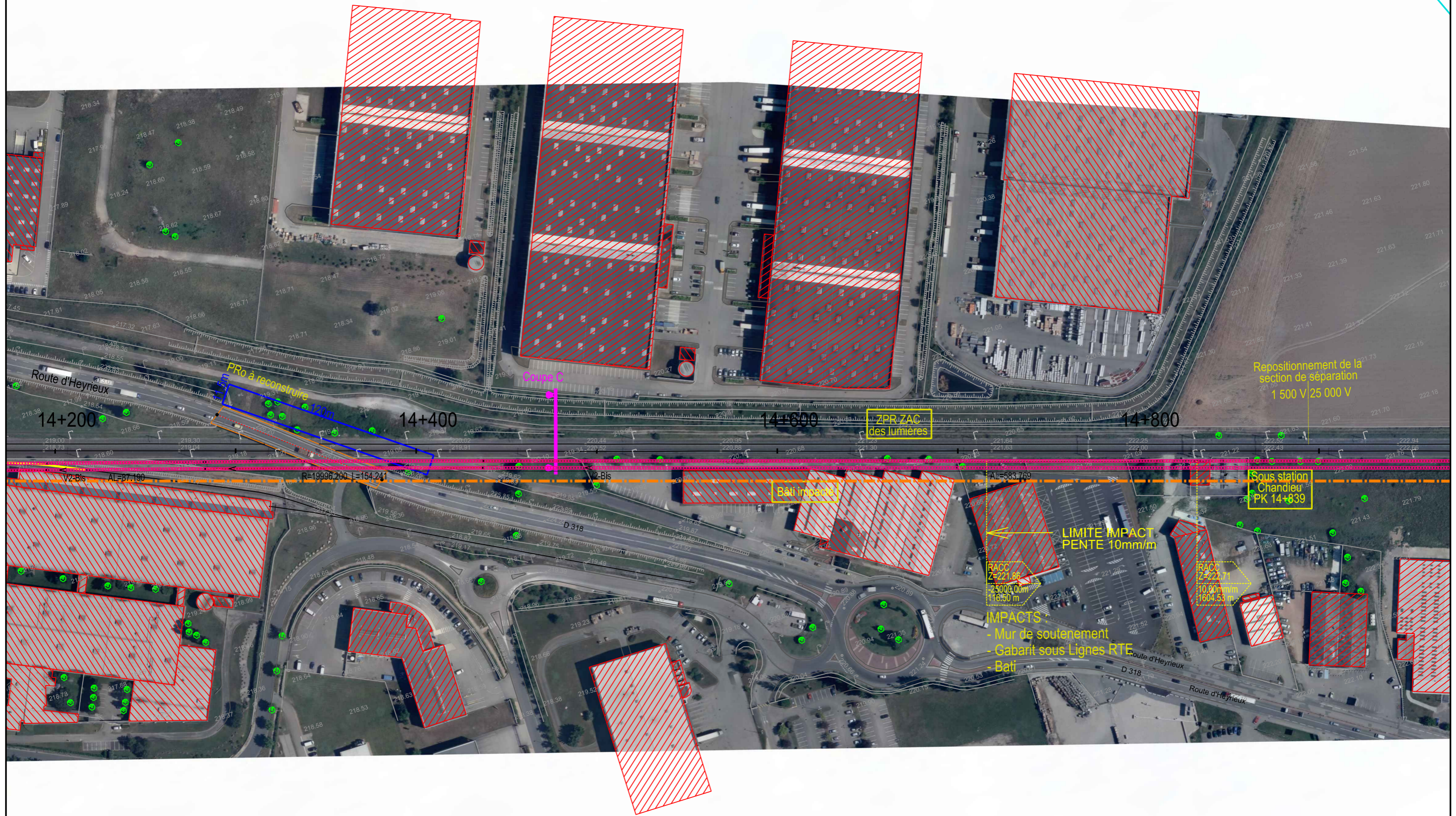
Dépose de la V86 non nécessaire.  
Entraxe V2bis / V86 respecté.

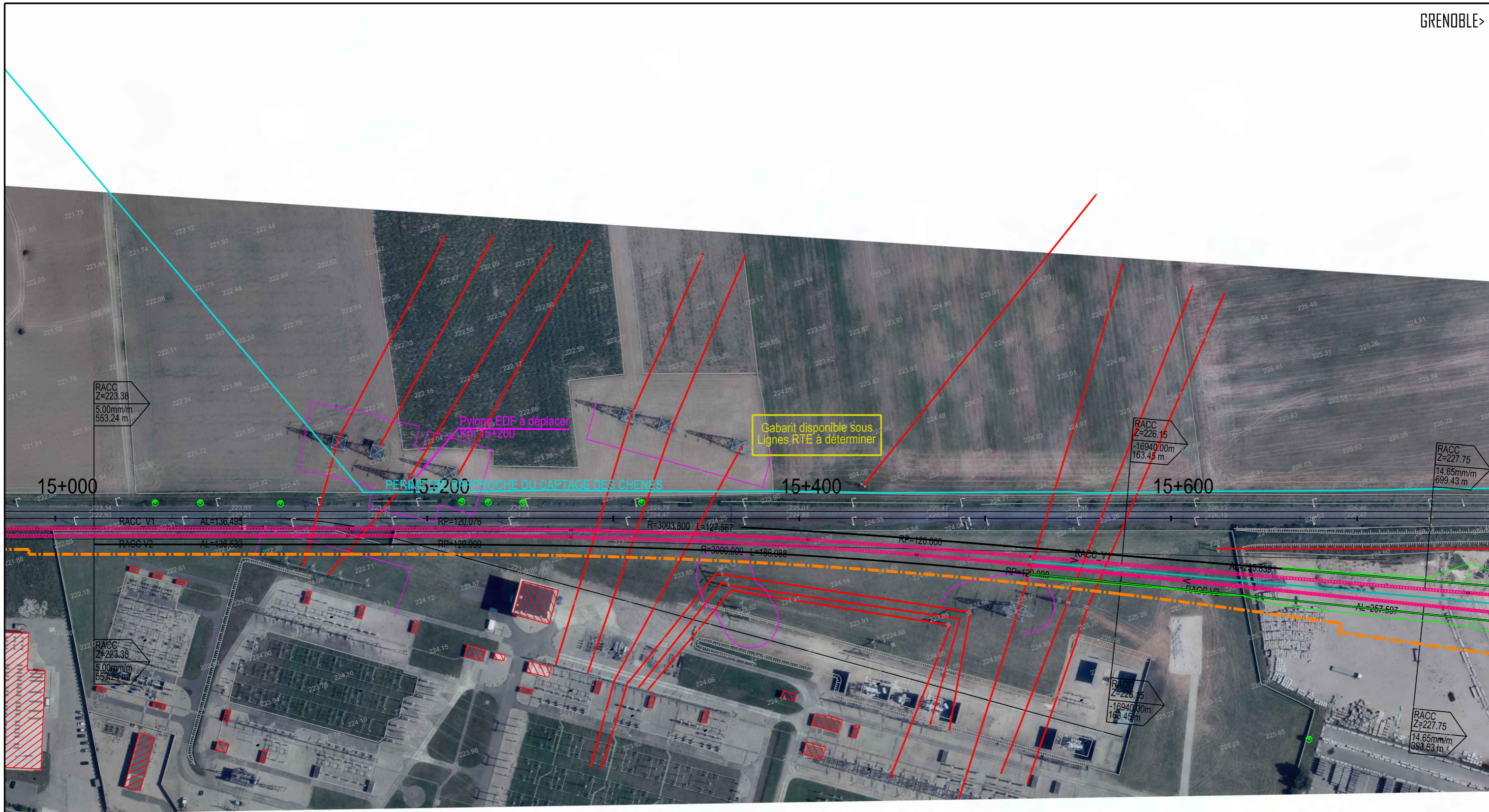
Communication  
100km/h











RACC  
Z=223.38  
5.00mm/m  
553.24 m

Pylone EDF à déplacer  
Km 15+200

Gabarit disponible sous  
Lignes RTE à déterminer

RACC  
Z=226.15  
-16940.00m  
163.45 m

RACC  
Z=227.75  
14.65mm/m  
699.43 m

RACC V1  
AL=136.494

RACC V2  
AL=126.538

RP=120.076

RP=120.000

R=3003.800 L=127.567

R=3000.000 L=186.000

RP=120.000

RP=120.000

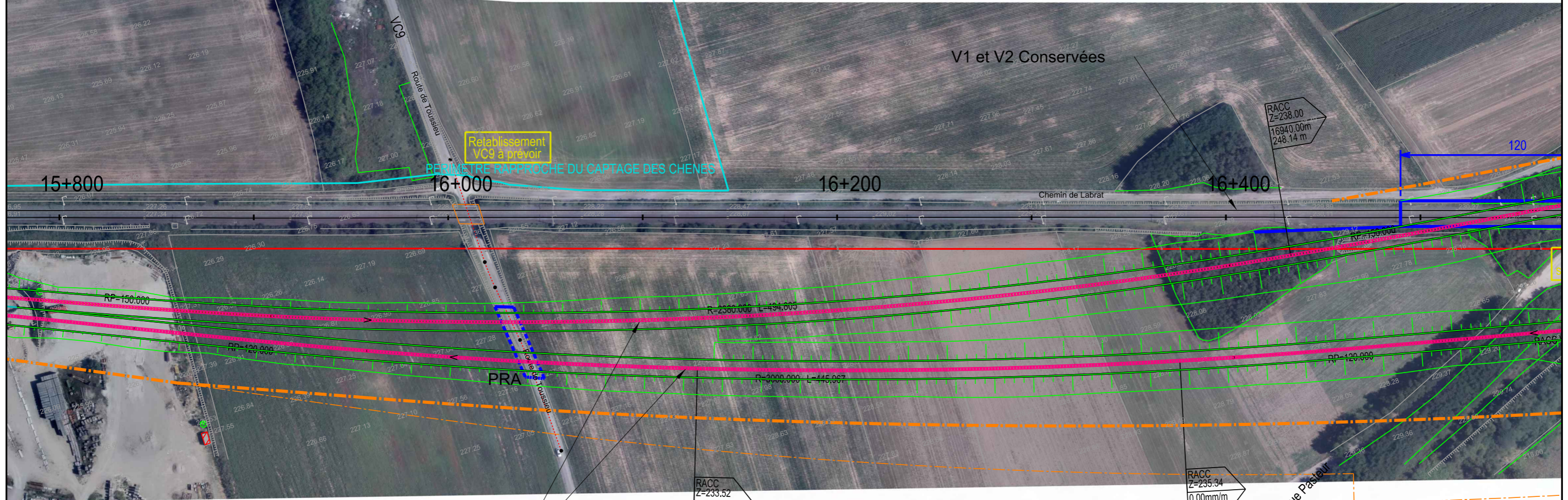
RACC V1

RACC V2

RACC  
Z=223.38  
5.00mm/m  
553.24 m

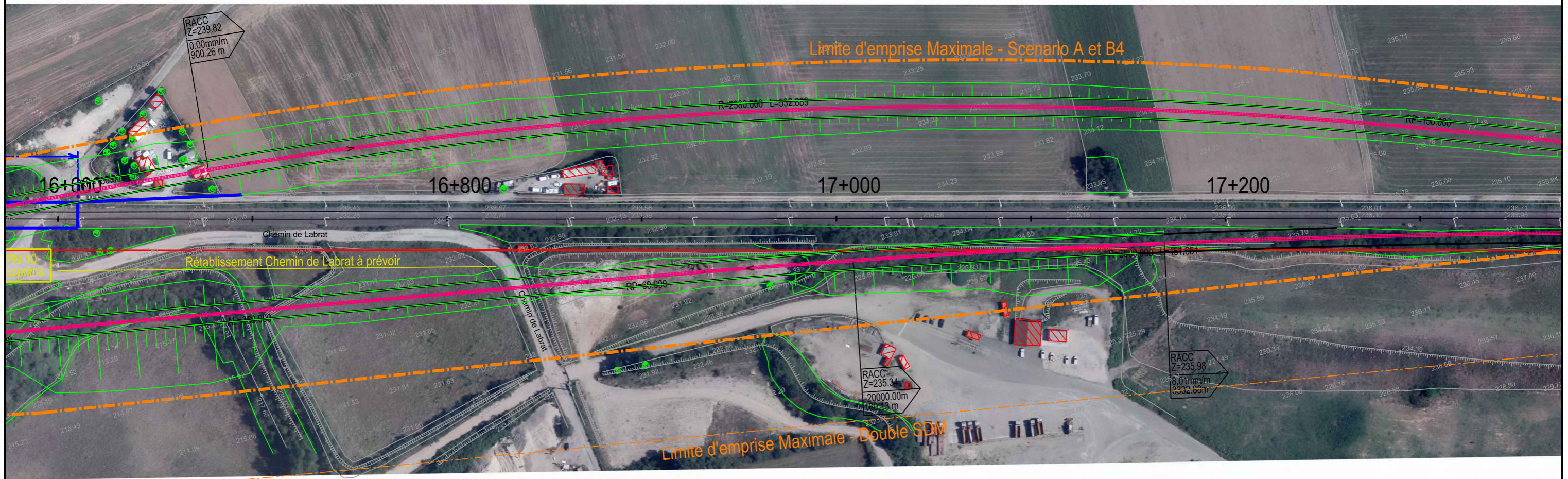
RACC  
Z=226.15  
-16940.00m  
163.45 m

RACC  
Z=227.75  
14.65mm/m  
699.43 m

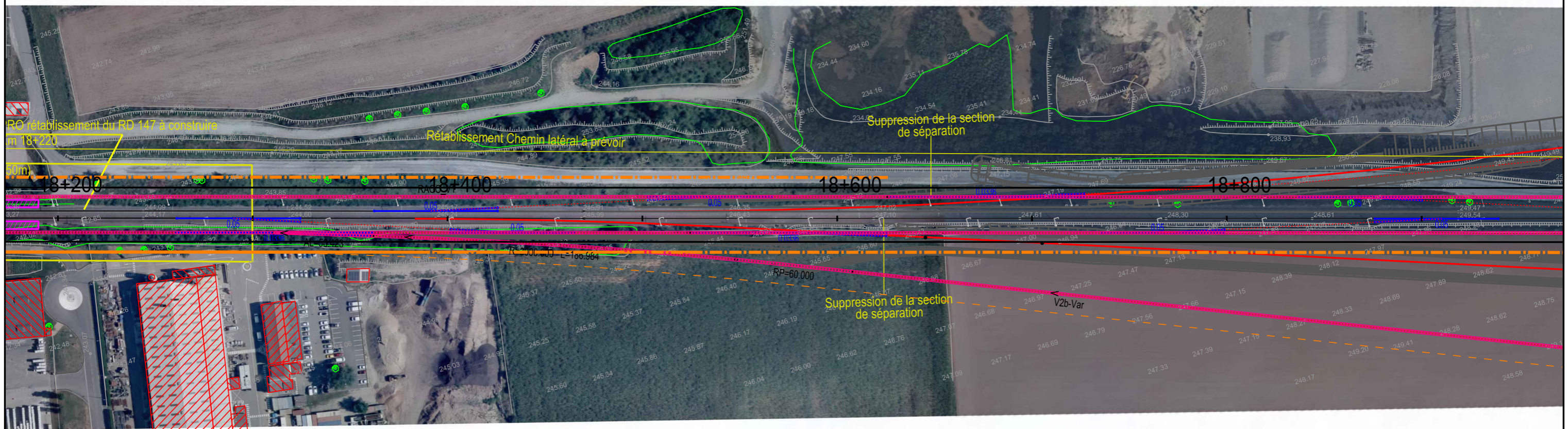


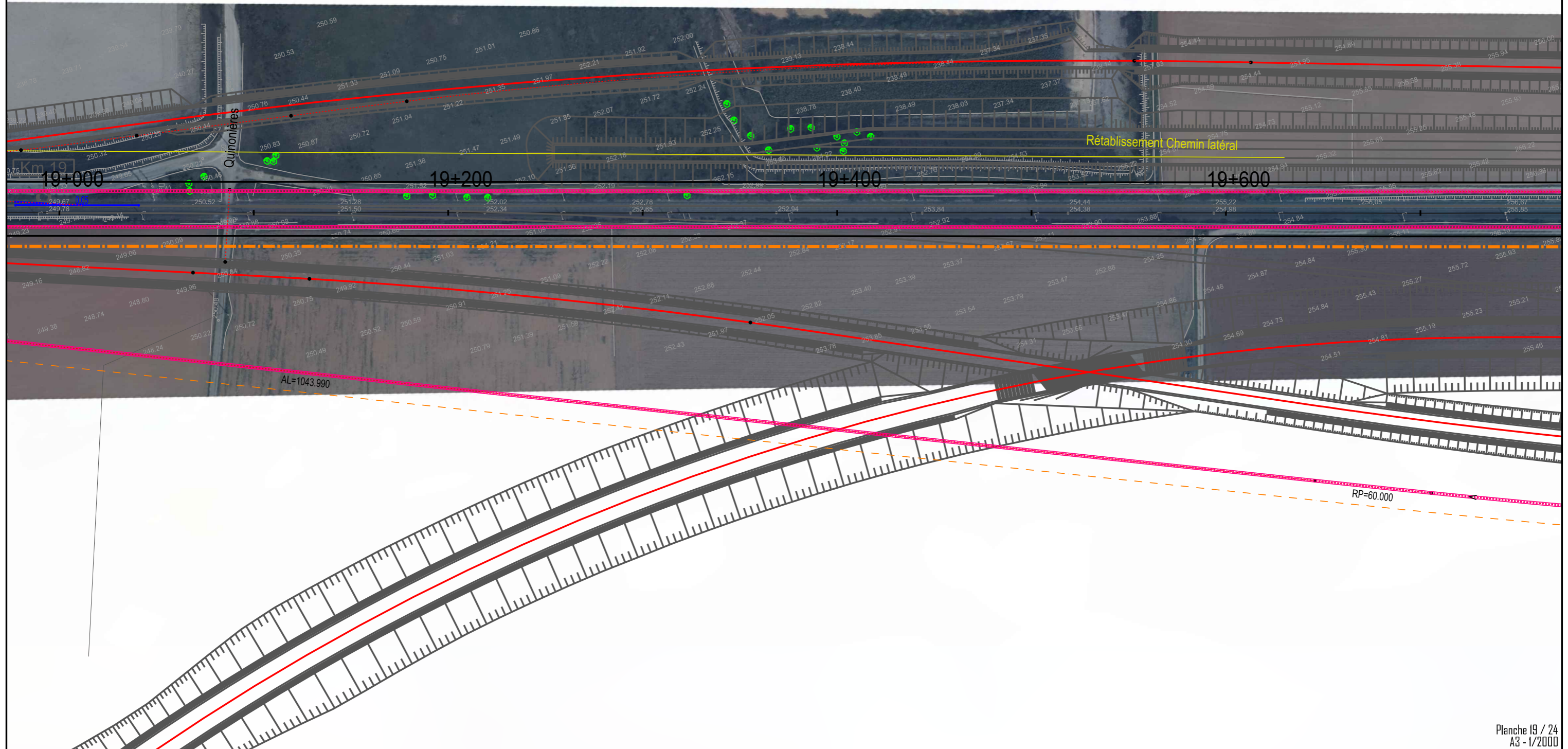
V 220

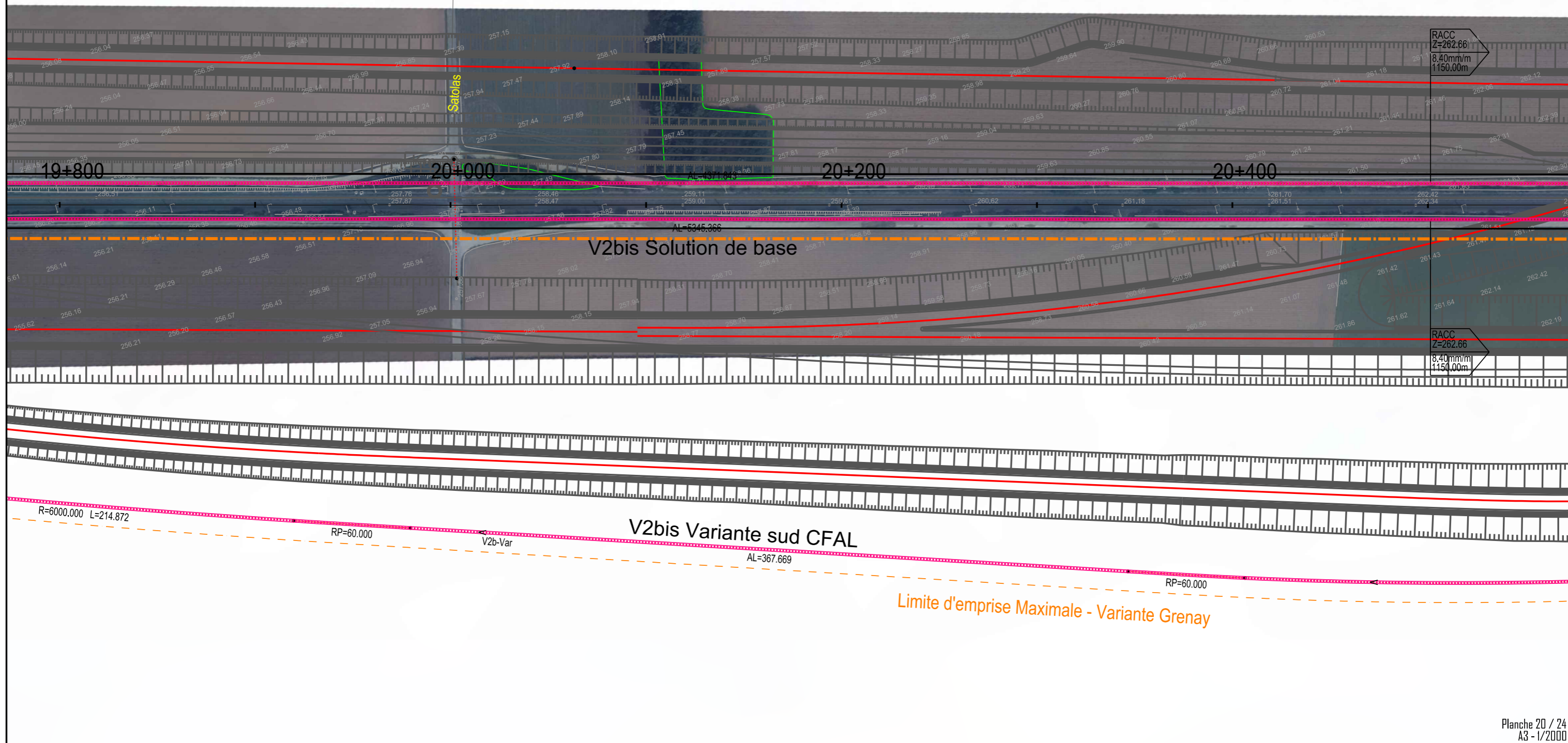












19+800

20+000

20+200

20+400

Satolas

V2bis Solution de base

V2bis Variante sud CFAL

V2b-Var

Limite d'emprise Maximale - Variante Grenay

RACC  
Z=262.66  
8.40mm/m  
1150.00m

RACC  
Z=262.66  
8.40mm/m  
1150.00m

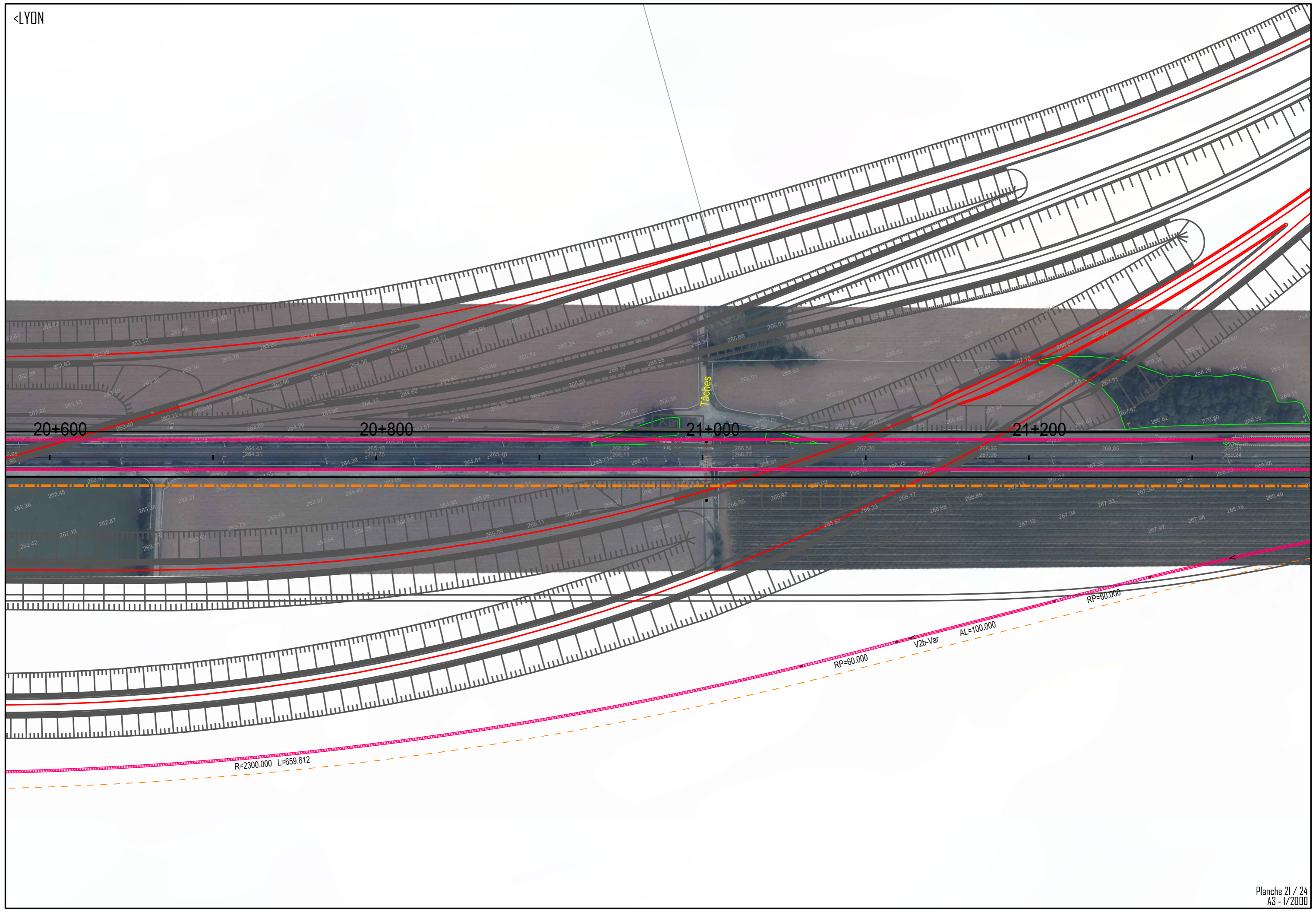
AL=5345.366

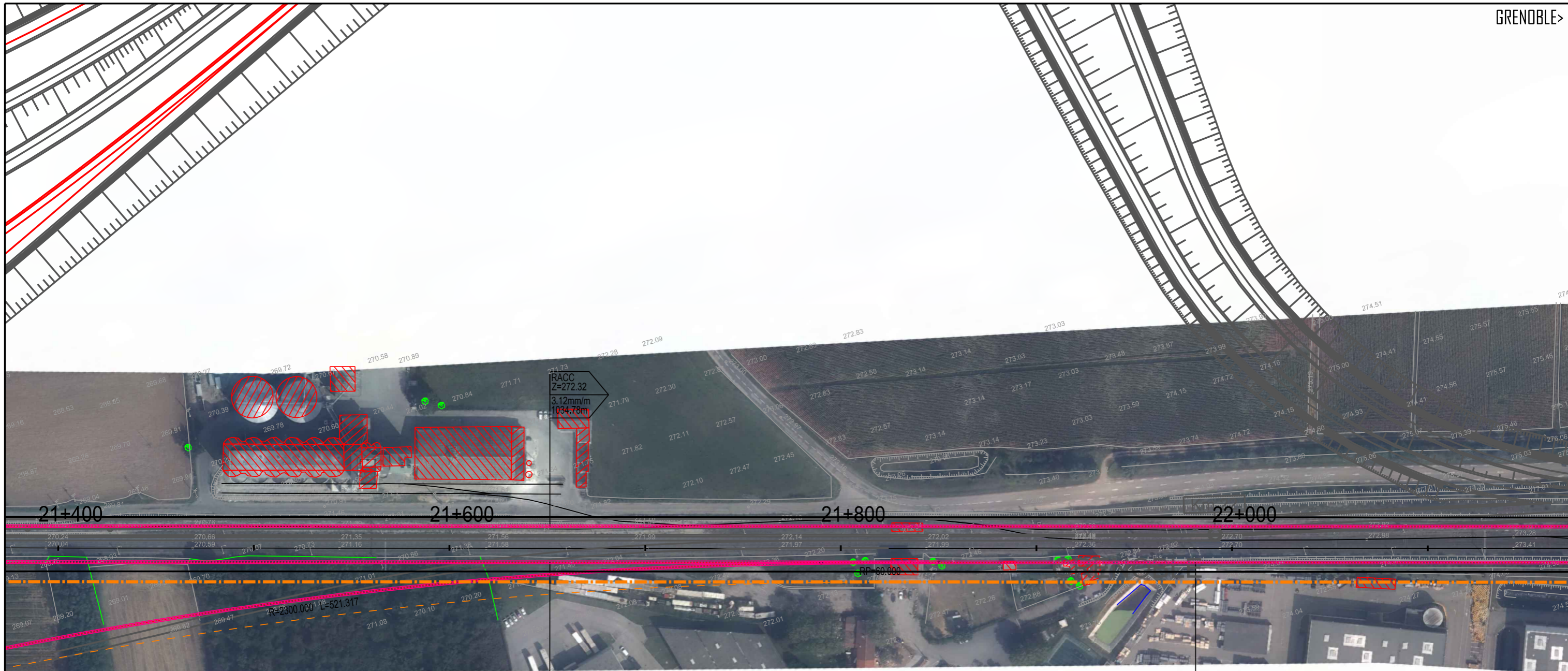
AL=367.669

R=6000.000 L=214.872

RP=60.000

RP=60.000





RACC  
Z=272.32  
3.12mm/m  
1034.78m

RACC  
Z=272.32  
1.30mm/m  
330.00 m

RACC  
Z=272.75  
4.00mm/m  
681.17 m

R=2300.000 L=521.317

