



La Carat
170 avenue Thiers
69455 LYON CEDEX 05



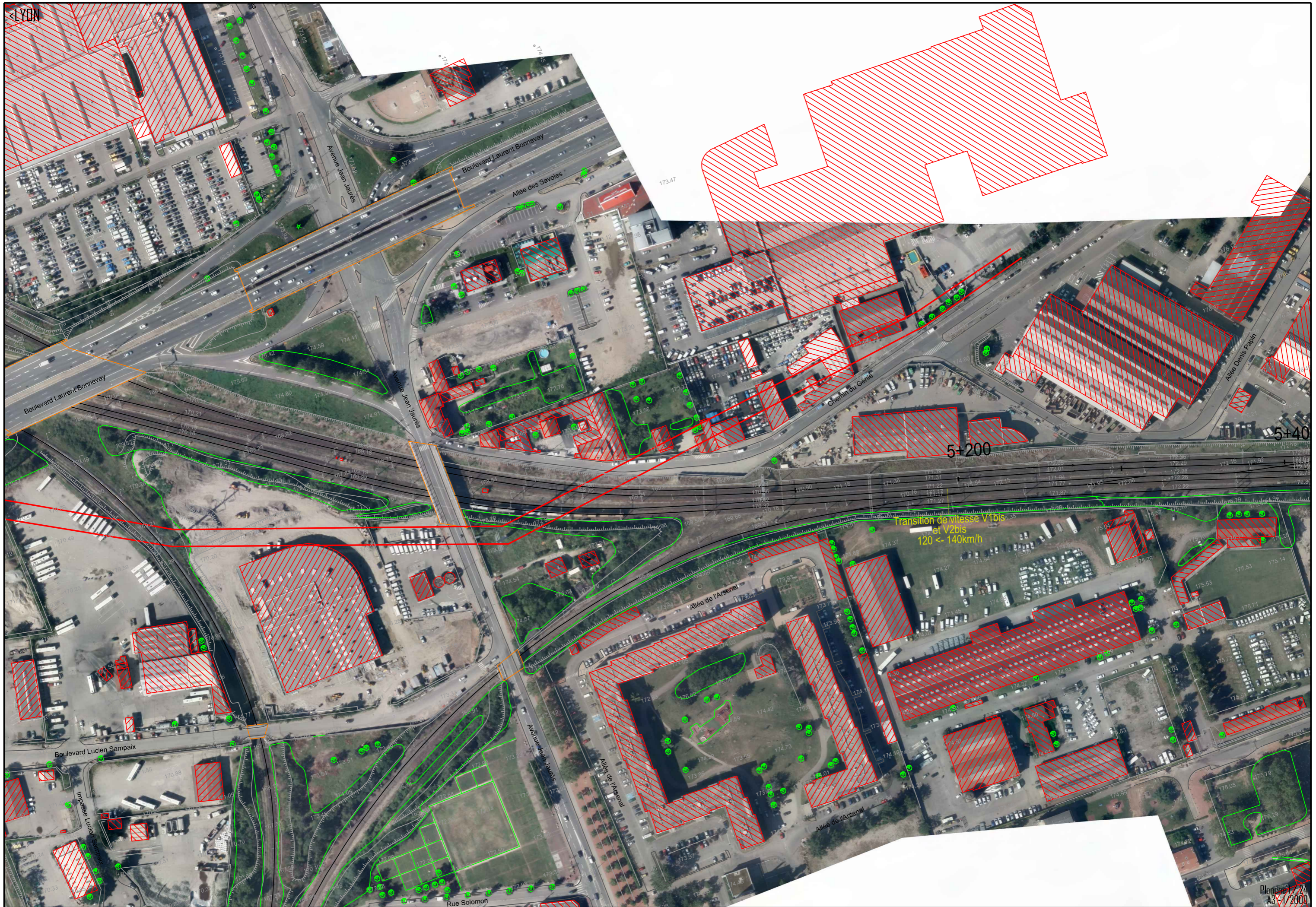
Etude de faisabilité du NFL

SECTEUR ST-FONS / GRENAY Scénario B0 : SDM Simple

Indice	Date	Modification	Dessiné	Vérfié	Approuvé
A	23/07/2015	Création du document	DMA	ELC	NCL
B	14/09/2015	Ajout Emprise Variante Grenay	DMA	ELC	NCL
C	22/10/2015	Modification Triage St Priest et rétablissement de la VC9	ARA	ELC	NCL

<i>Ligne</i>	<i>Mission</i>	<i>Entité émettrice</i>	<i>Discipline</i>	<i>Type de document</i>	<i>N°Chrono</i>	<i>Indice</i>
LYON-GRENOBLE	Faisabilité	EGIS RAIL	-	PLAN	-	C

Echelle (s): 1/2000	Date : 22/10/2015
---------------------	-------------------

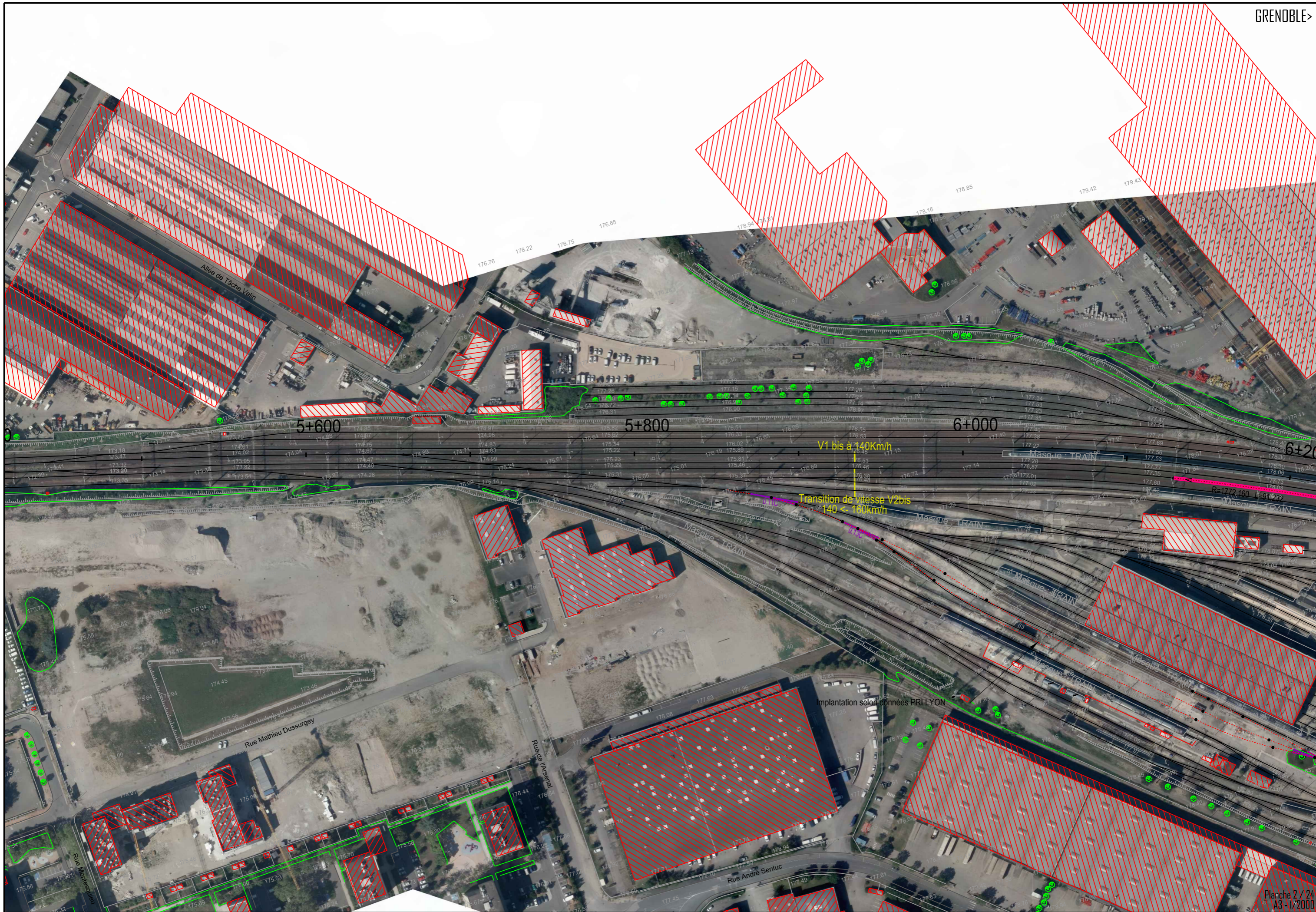


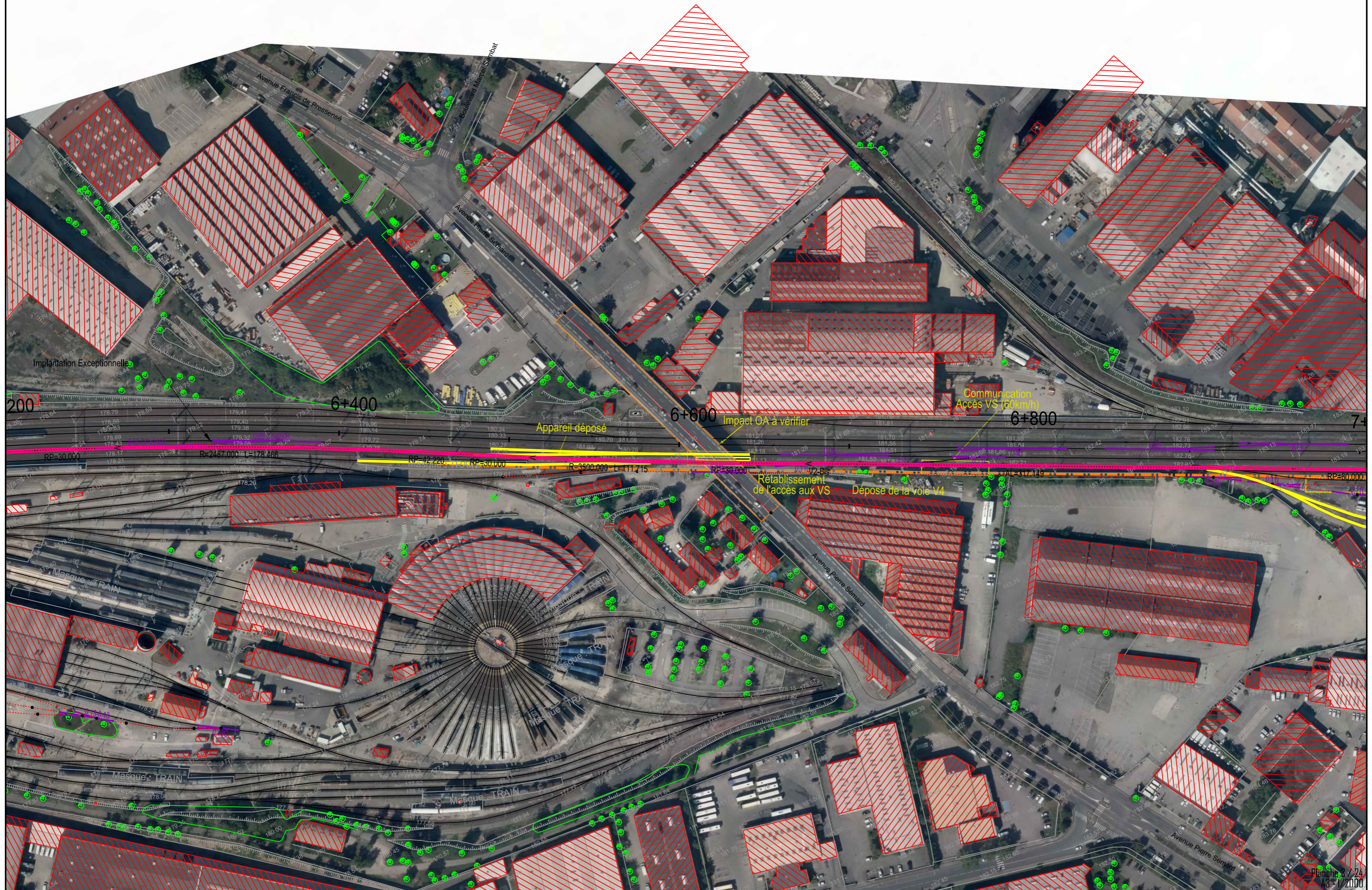
LYON

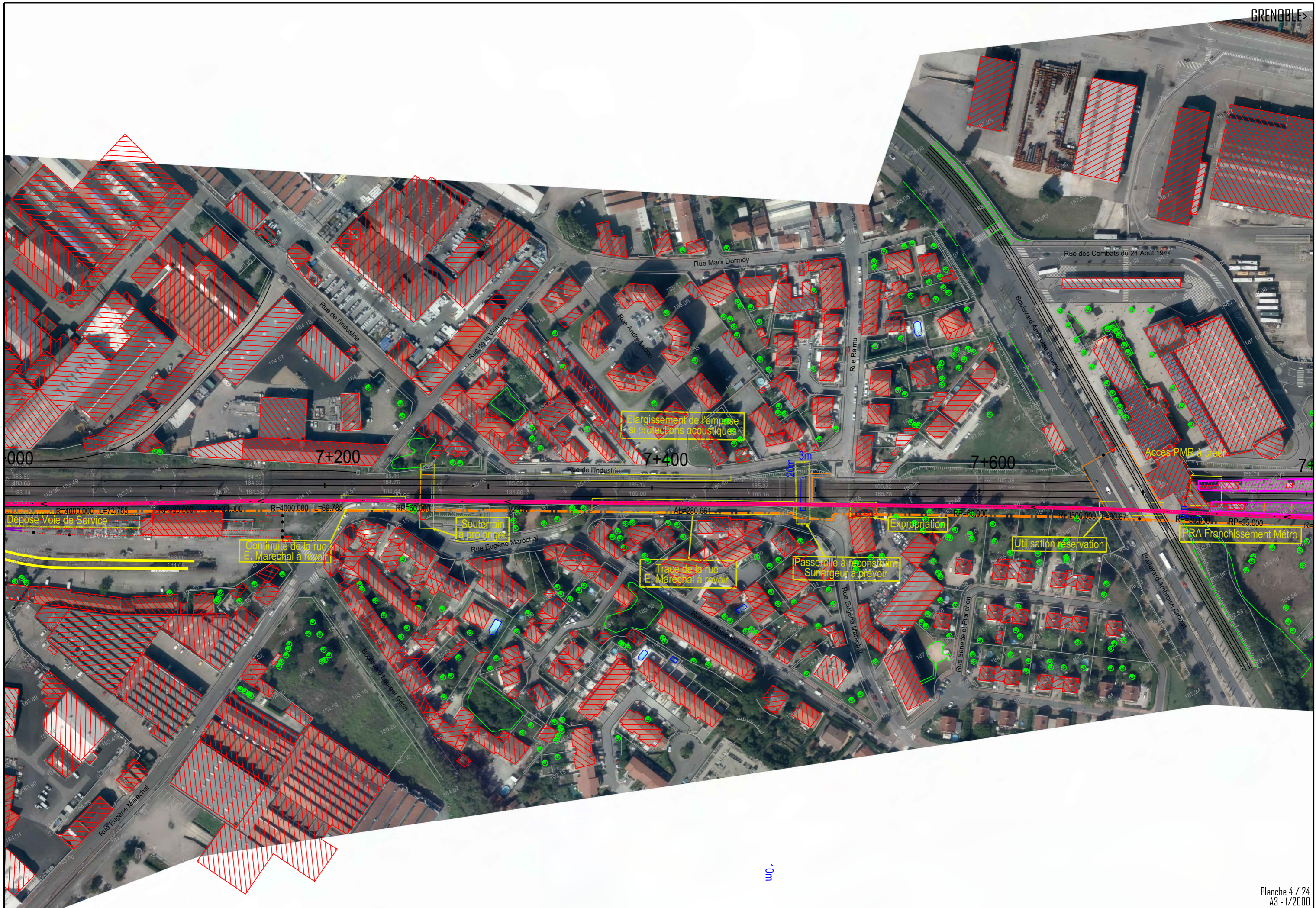
Transition de vitesse V1bis et V2bis 120 <- 140km/h

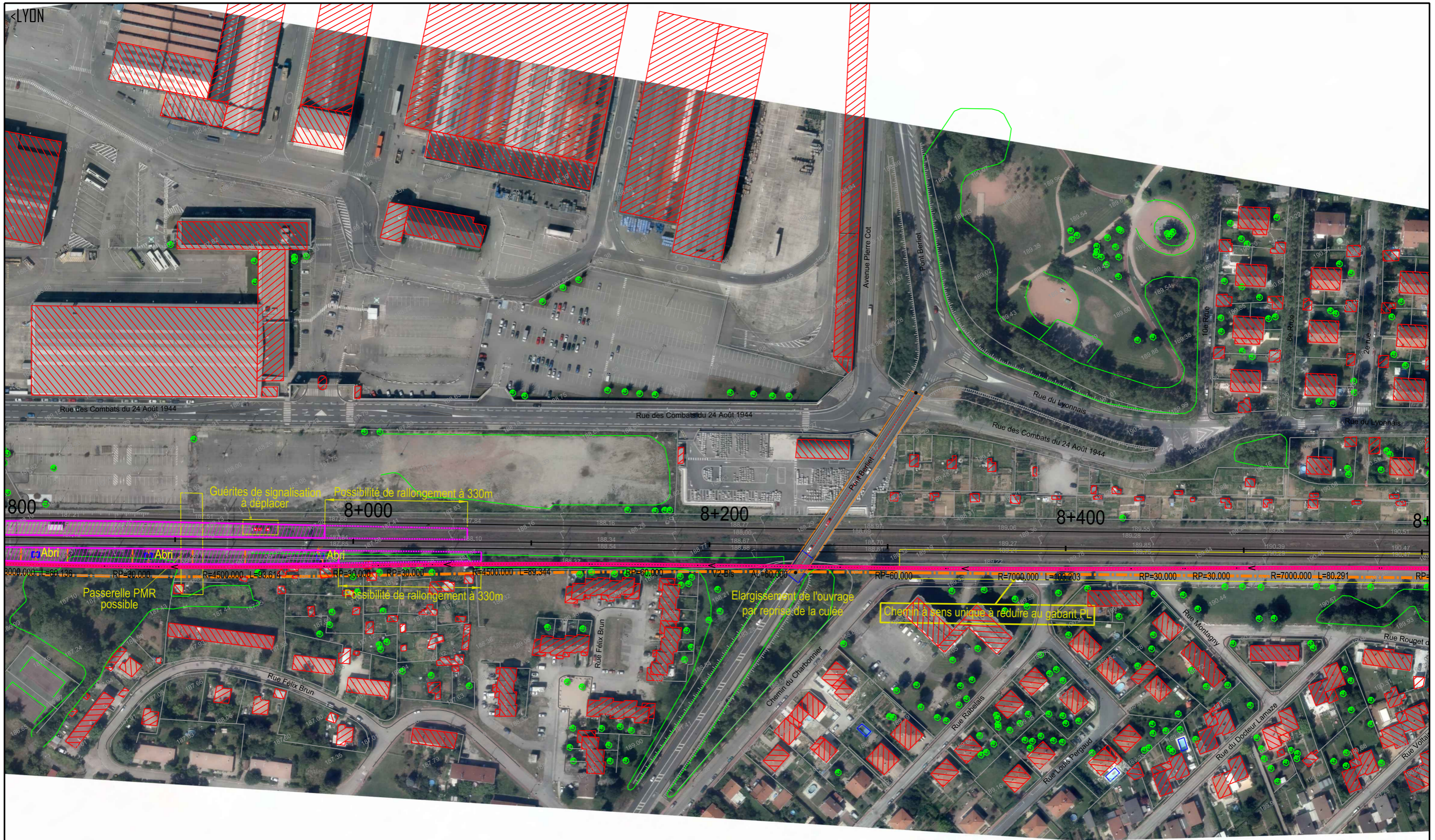
5+200

5+40









<LYON

800

3009.000

8+000

8+200

8+400

8+

Guérites de signalisation à déplacer

Possibilité de rallongement à 330m

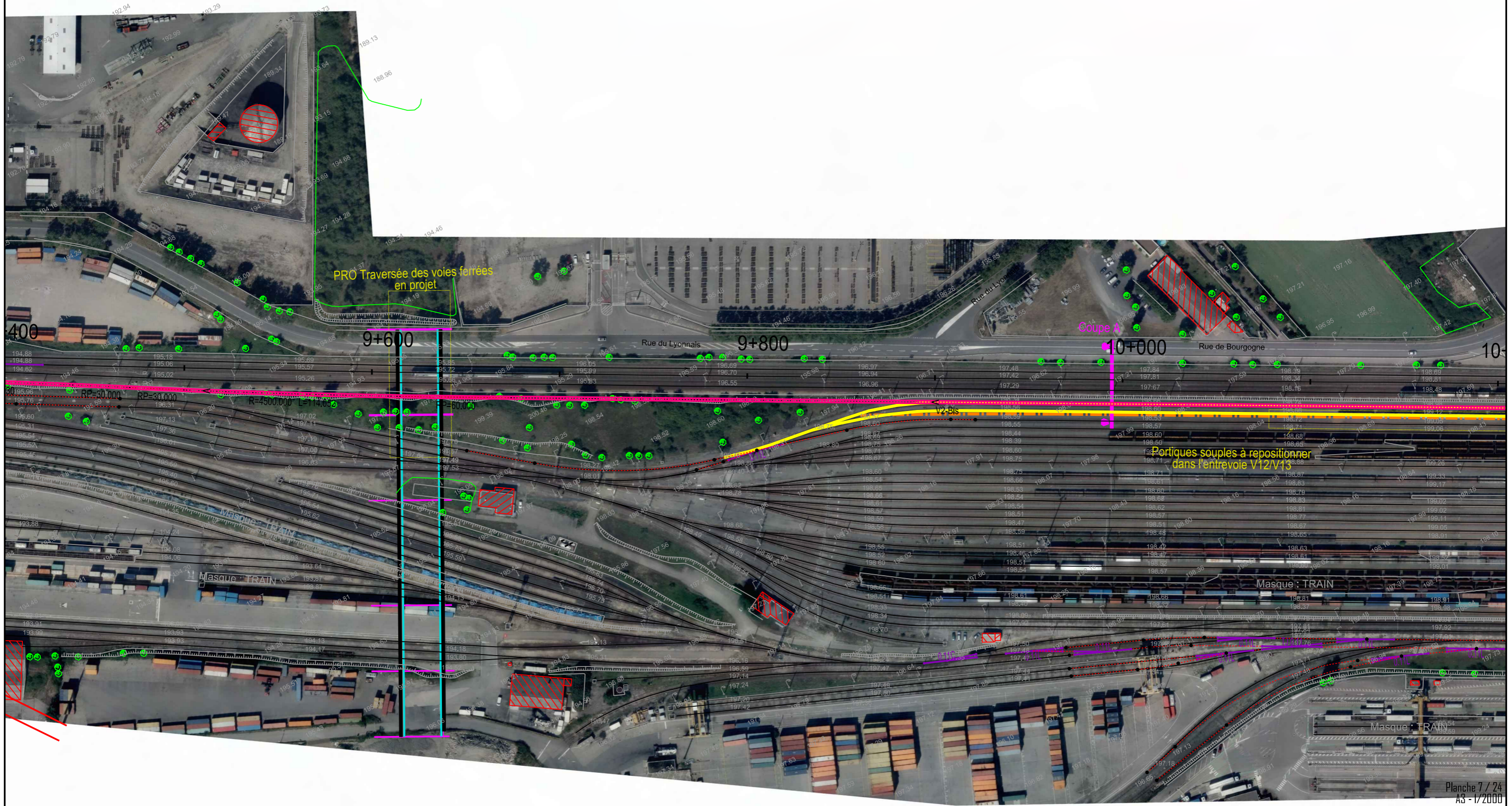
Passerelle PMR possible

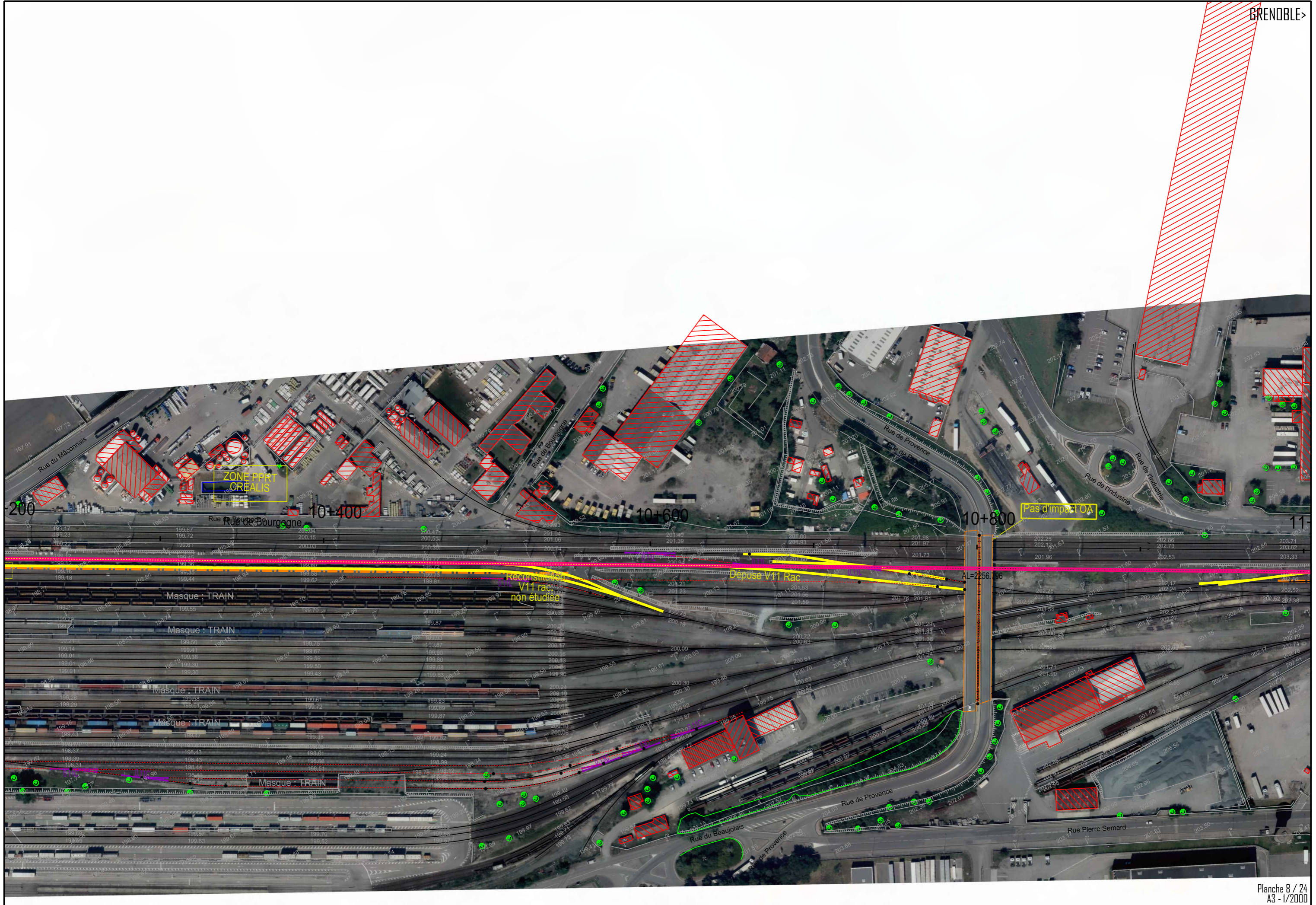
Possibilité de rallongement à 330m

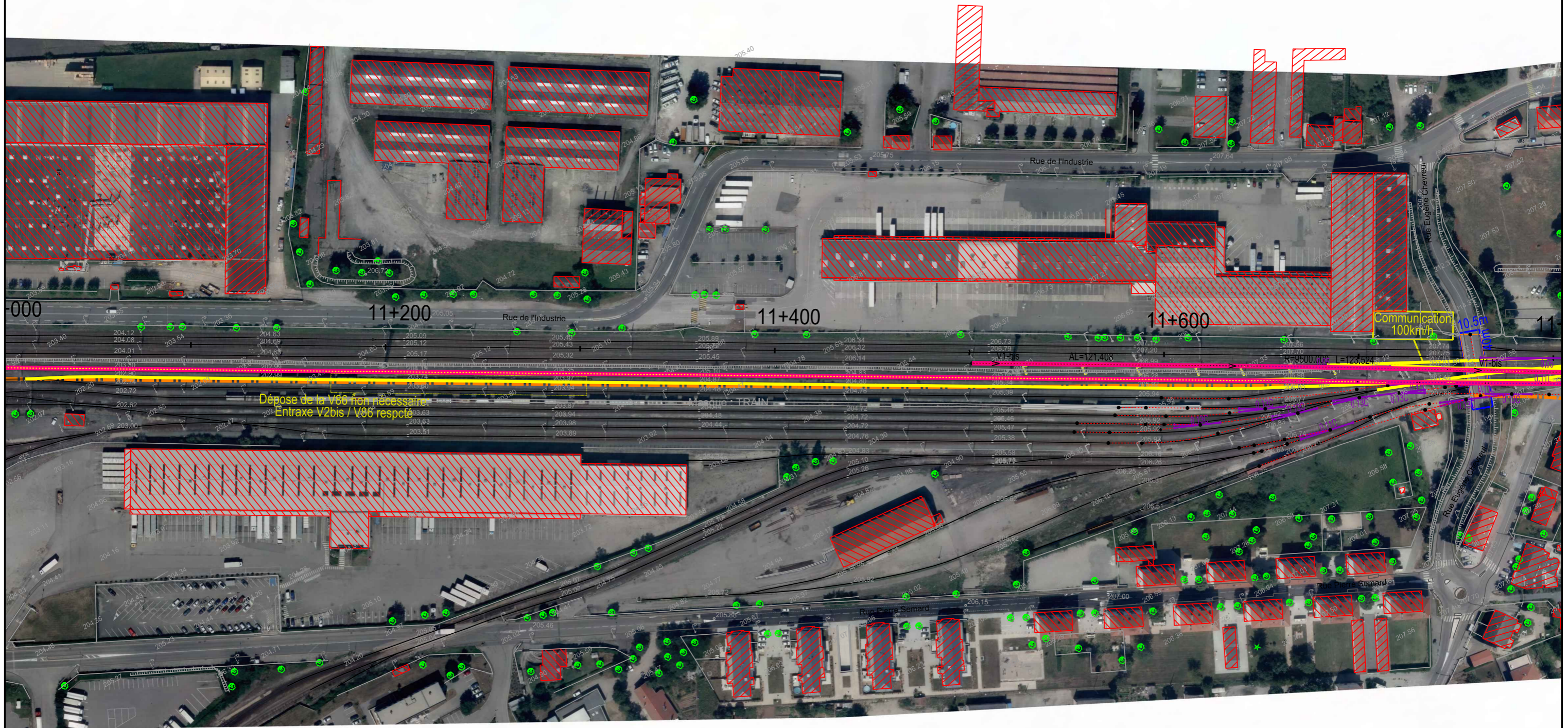
Elargissement de l'ouvrage par reprise de la culée

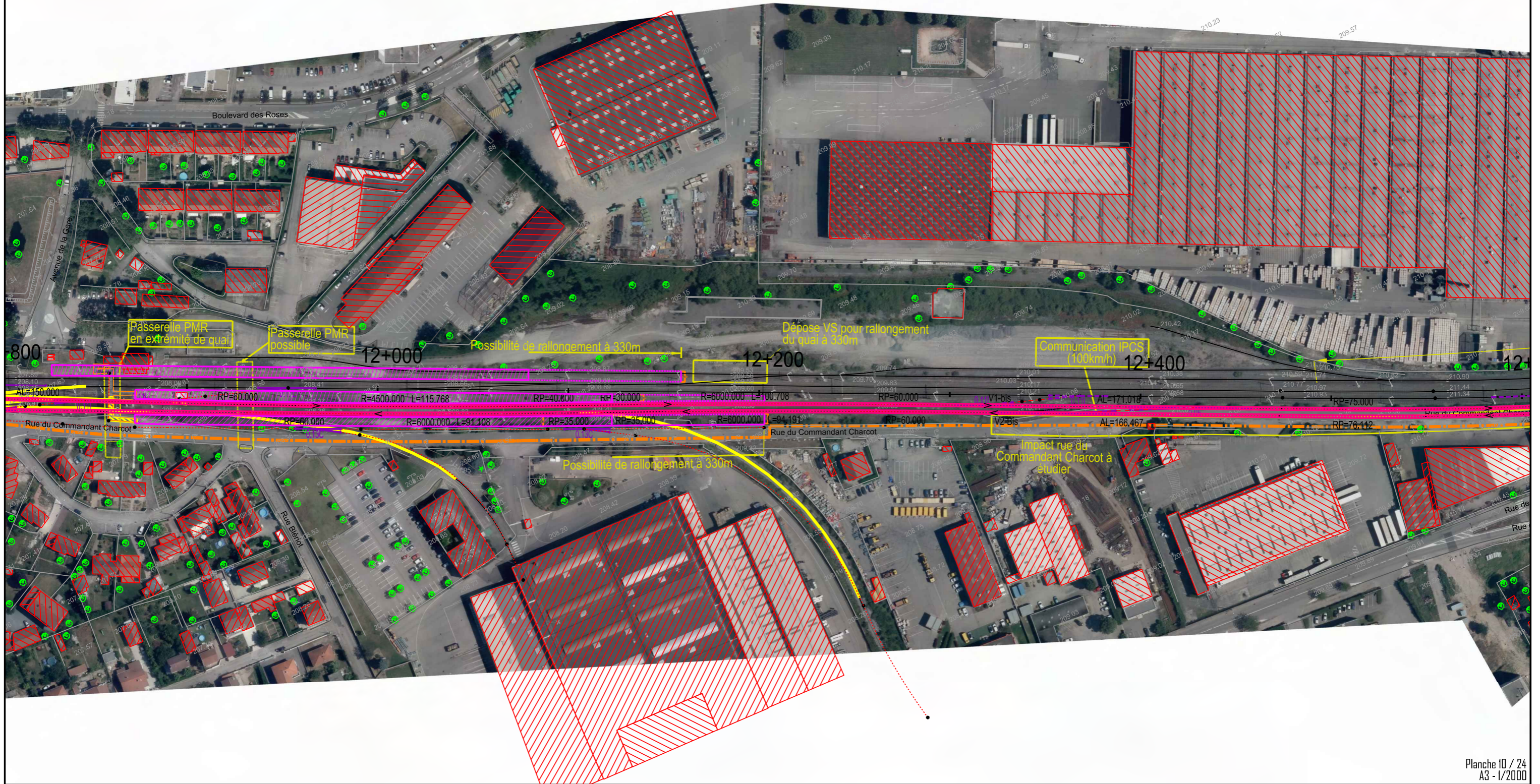
Chemin à sens unique à réduire au gabarit PL





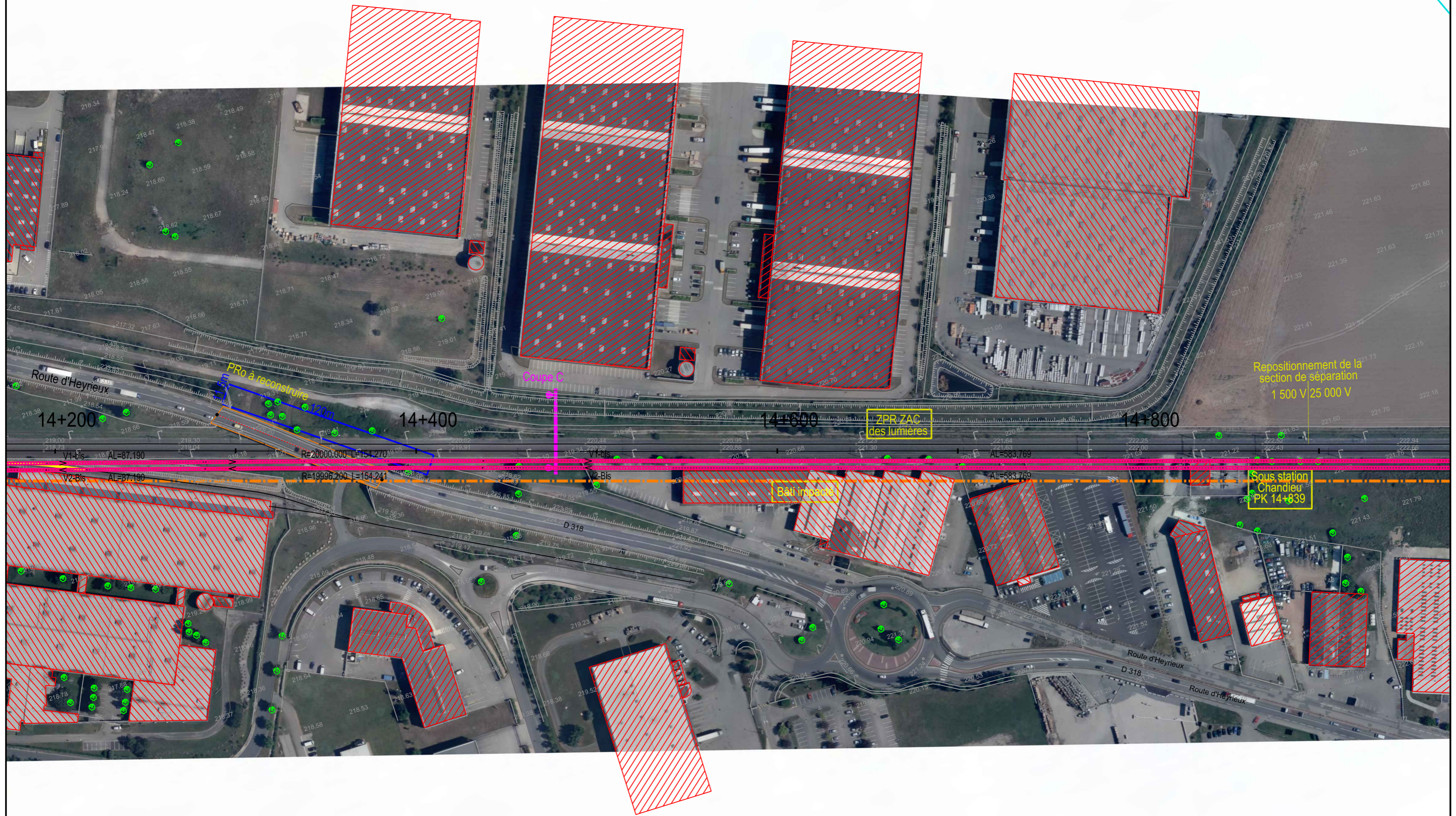










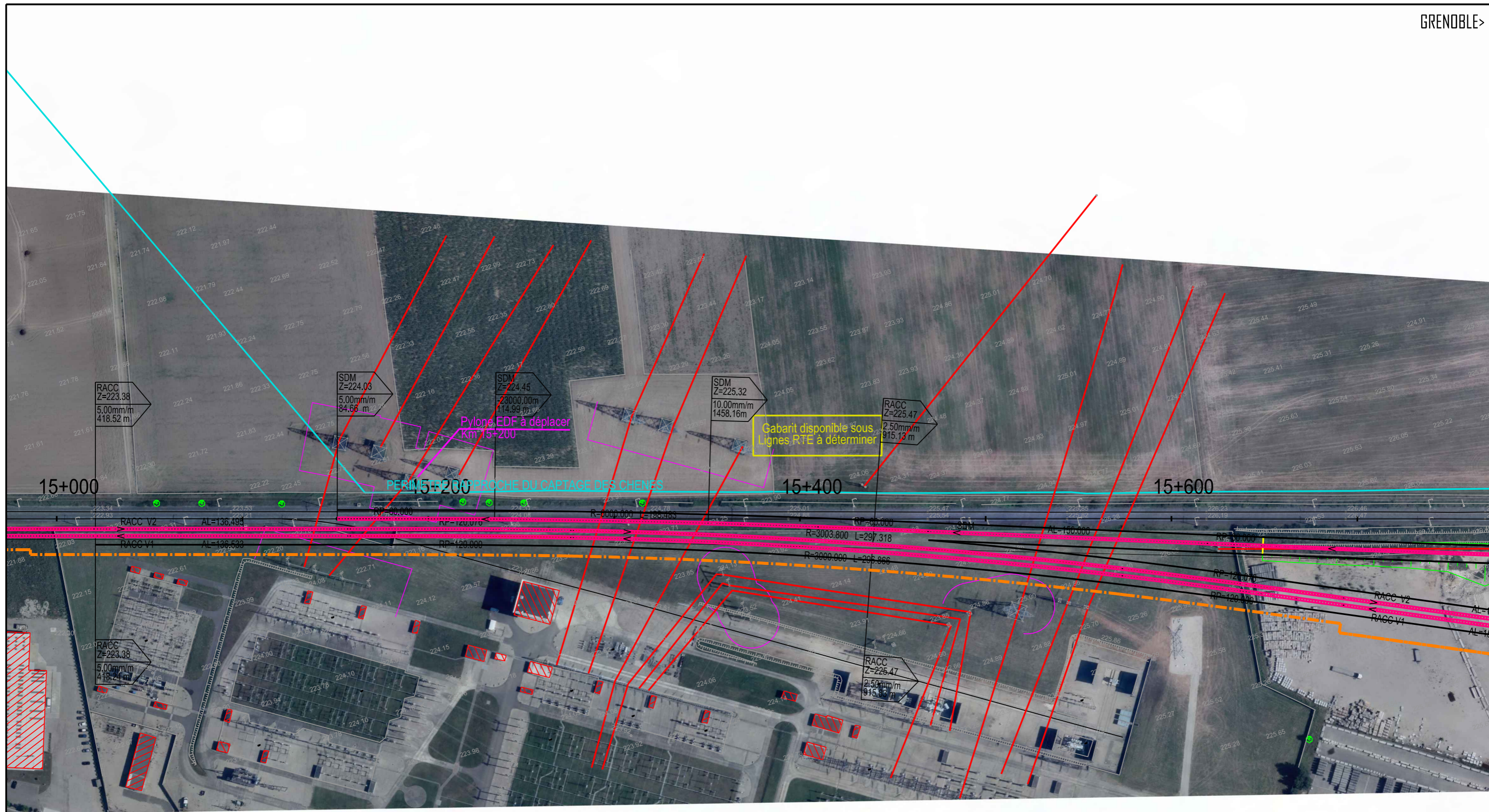


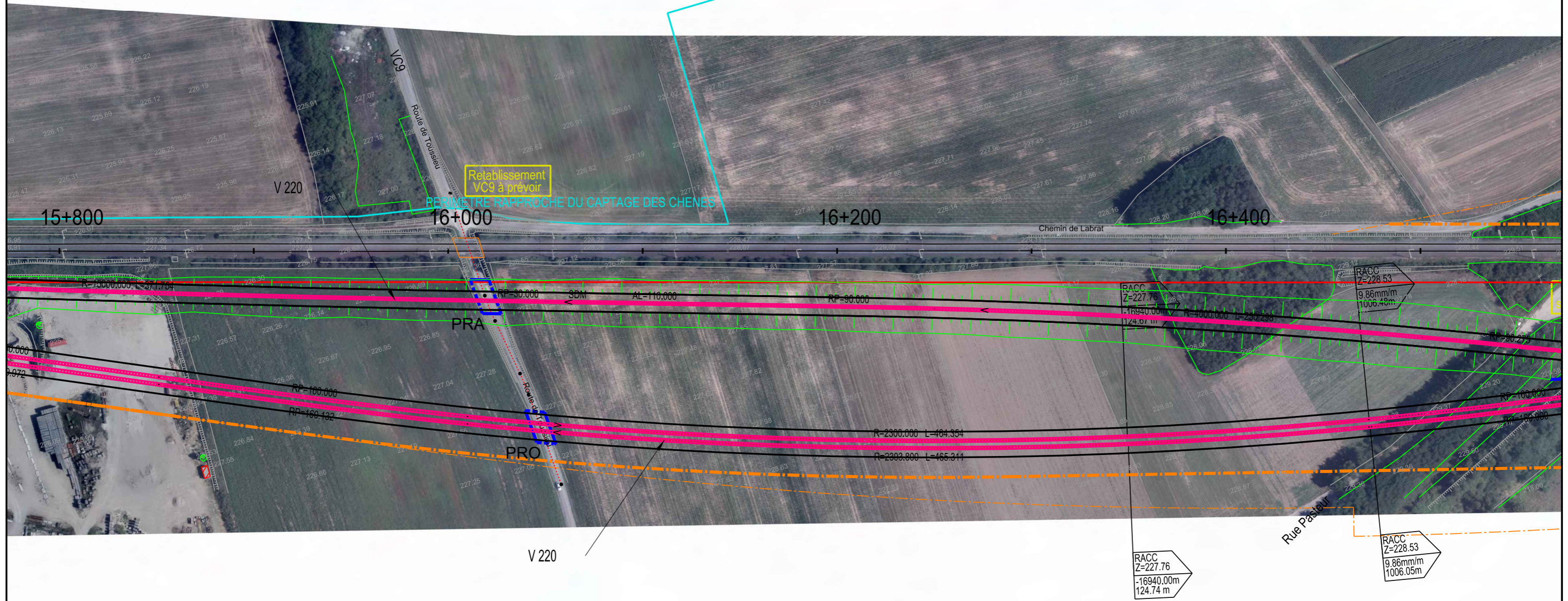
Repositionnement de la section de séparation 1 500 V / 25 000 V

ZPR ZAC des Lumieres

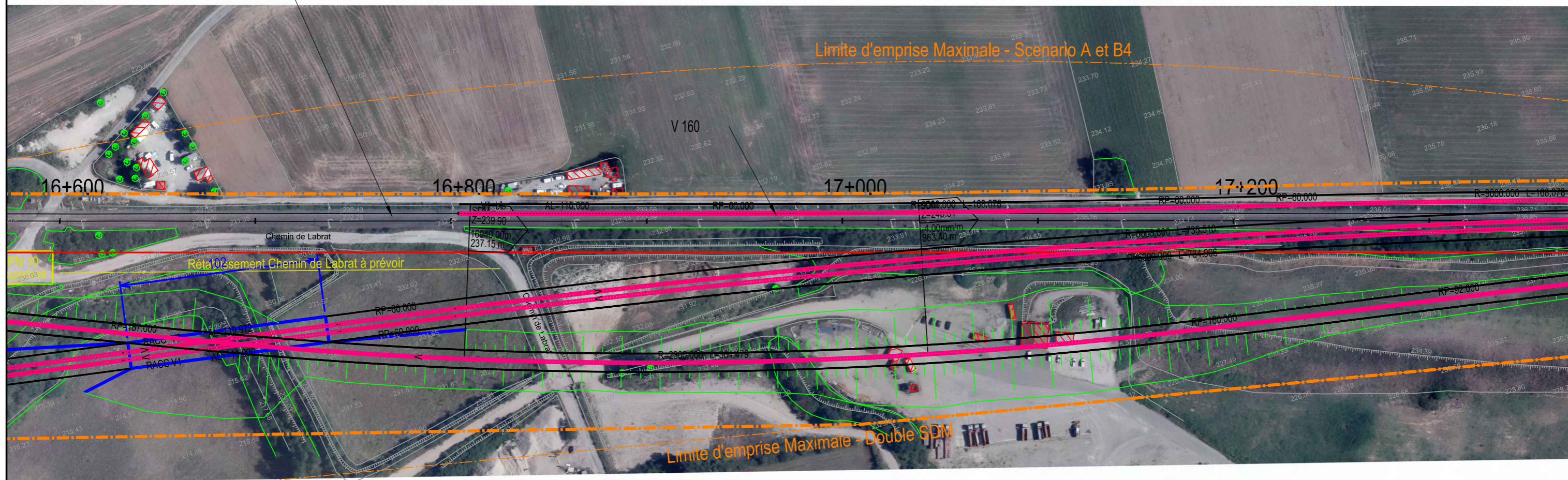
Bâti imparfait

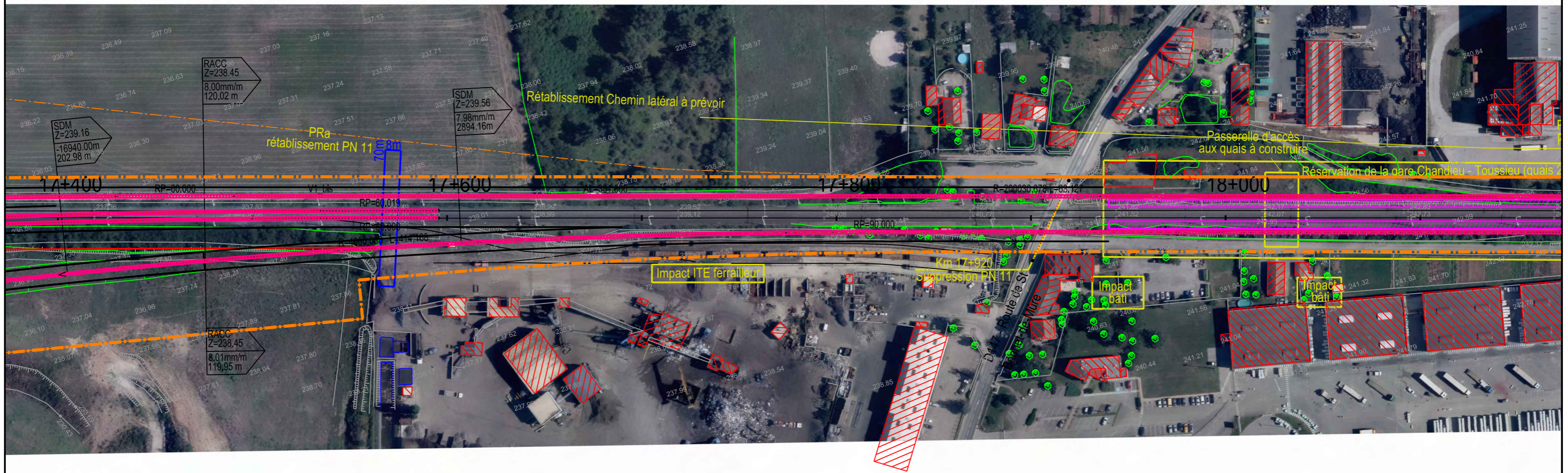
Sous station Chandieu PK 14+839

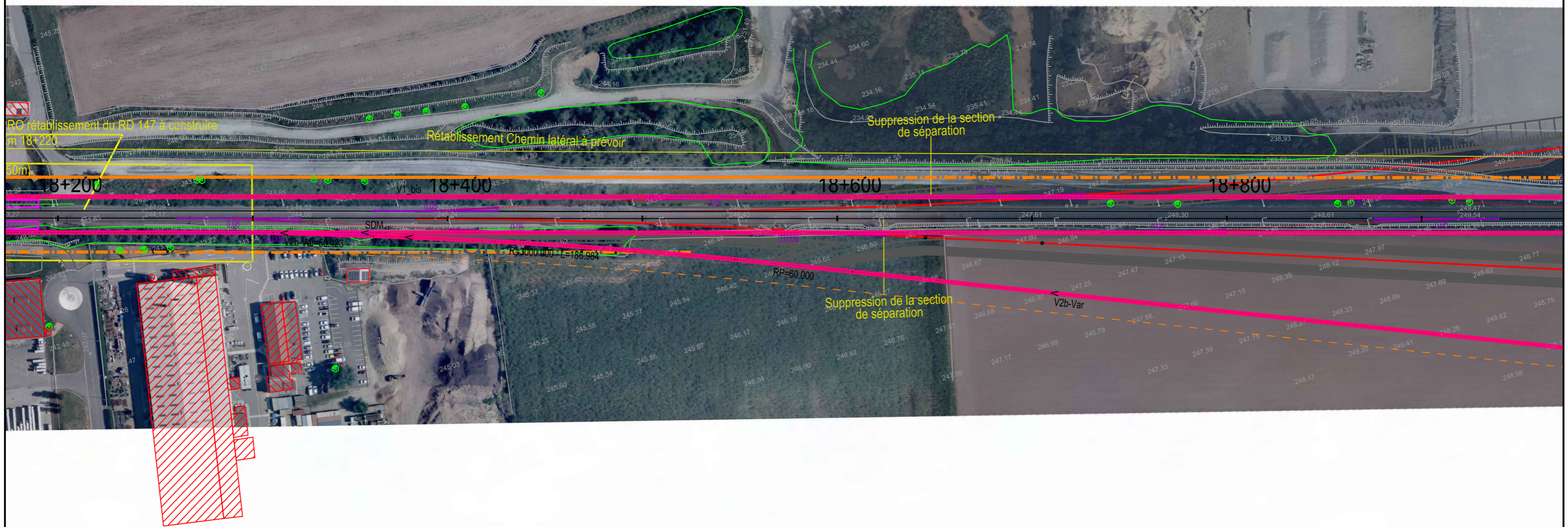


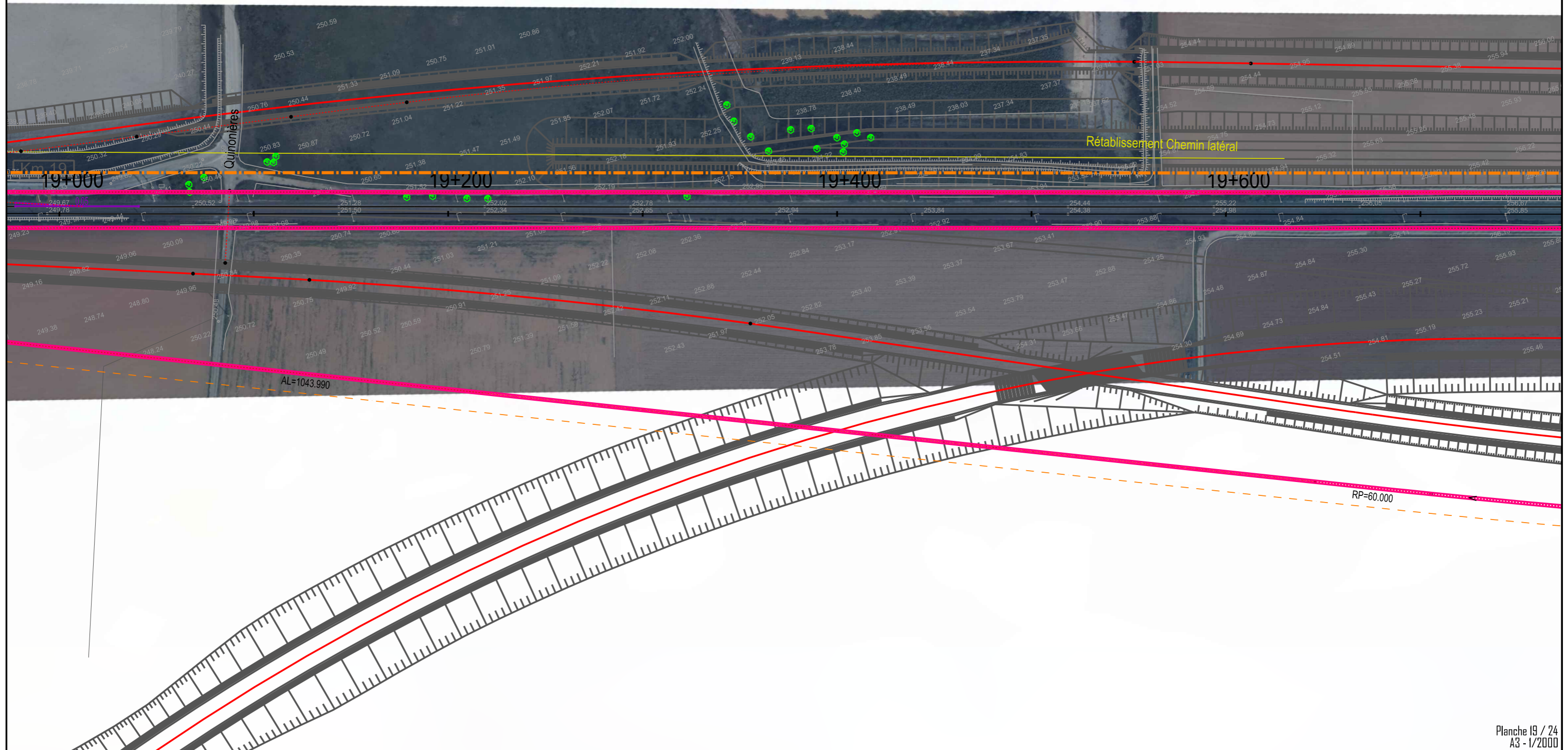


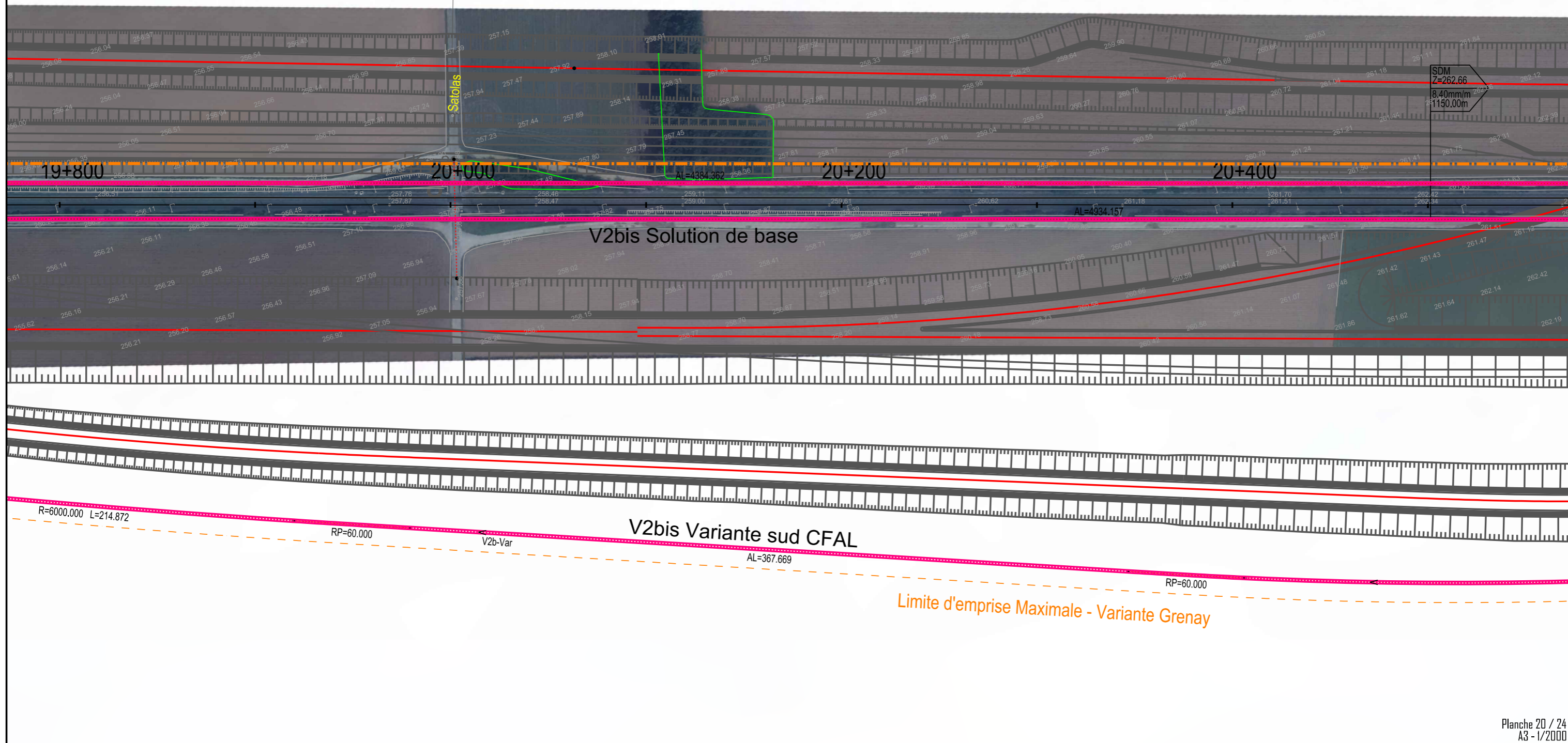
V2 déposée
V1 conservée

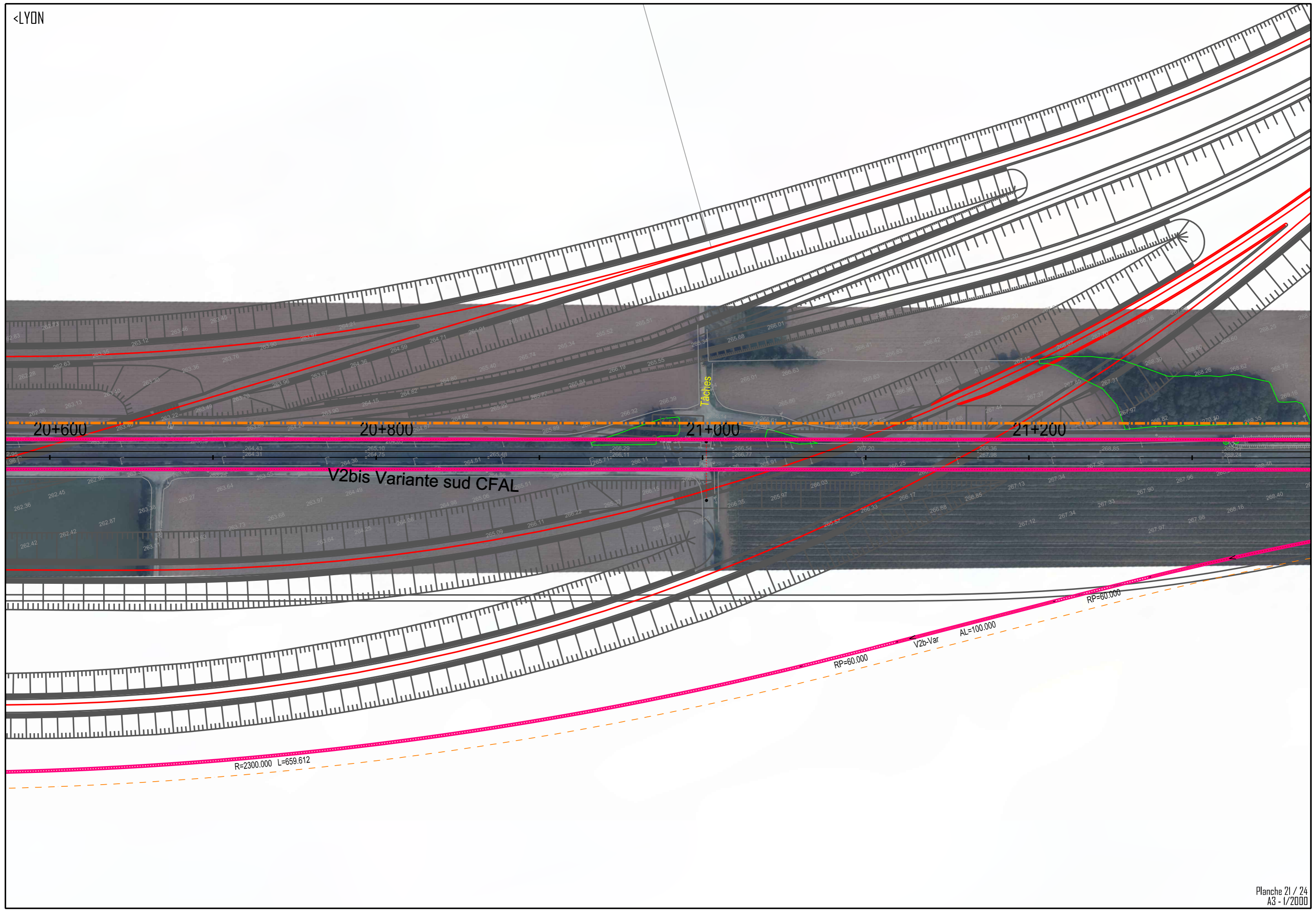












V2bis Variante sud CFAL

$R=2300.000$ $L=659.612$

$RP=60.000$ V2b-Var $AL=100.000$ $RP=60.000$

